

SHIV BANSAL TEAM

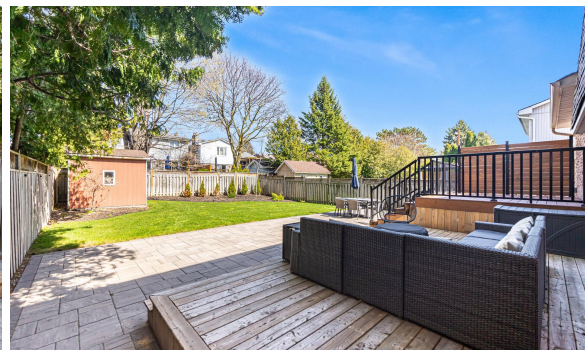
PROFESSIONALS IN REAL ESTATE

DIRECT: 416.396.3550 | SHIV@BANSALTEAM.COM

FOLLOW US ON     BANSALTEAM.COM



Top 5 Team In Canada For Over 20 Years In Century 21



1825 BRONTE SQUARE

www.1825Bronte.com

CENTURY 21

Percy Fulton Ltd.

BROKERAGE



BANSAL TEAM

PROFESSIONALS IN REAL ESTATE

DIRECT: 416.396.3550 | INFO@BANSALTEAM.COM

FOLLOW US ON     BANSALTEAM.COM

CENTURY 21

Percy Fulton Ltd.

BROKERAGE

CENTURY 21 PERCY FULTON LTD. BROKERAGE

OFFICE: 416.298.8200

CENTURY 21 PERCY FULTON LTD. BROKERAGE

THIS IS NOT INTENDED TO SOLICIT BUYERS OR SELLERS CURRENTLY UNDER CONTRACT WITH A BROKERAGE.

1825 Bronte Sq.

BANSAL TEAM
PROFESSIONALS IN REAL ESTATE

www.1825Bronte.com

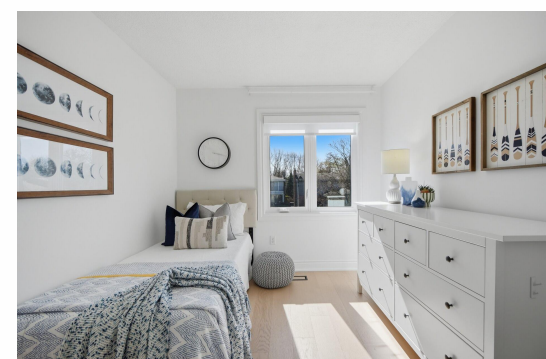
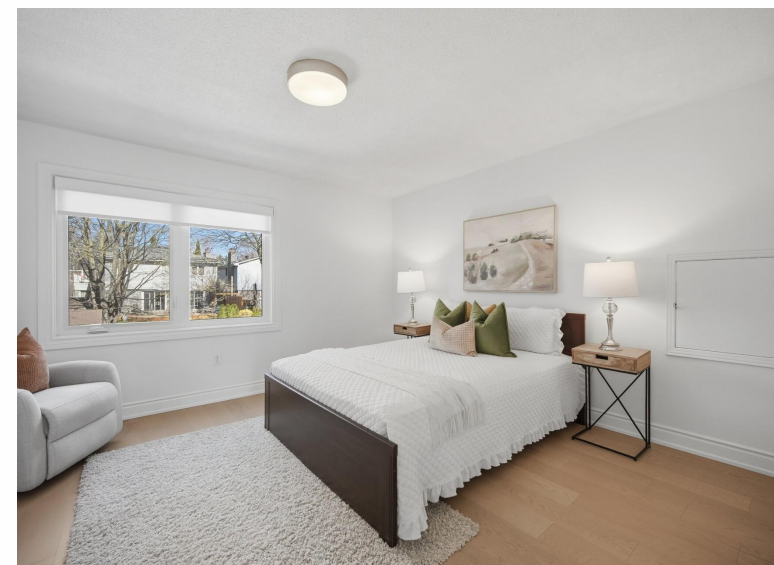


WELCOME TO 1825 Bronte Square

Absolutely Beautiful 3 Bedroom 5 Level Side Split Home In Highly Desirable Pickering Location * 1739 Sq Ft* New Eng. Hardwood Floors Throughout * Freshly Painted * Living Room With Cathedral Ceilings & Open Feel * New Oak Stairs With Wrought Iron Spindles* Primary Bedroom With Newly Upgraded 4pc Ensuite * Convenient Interior Access To Garage * Double Access To Backyard From Home & Side Entrance * 2 Level Basement * Landscaped Backyard With Smart Sprinkler System * Interlocking Rear Patio Ideal For Outdoor Entertaining * Newer Windows* Exterior Pot Lights* Updated 200 Amps Electrical Panel* Steps To Schools, Parks, Bike Trails, Shopping, Pickering Town Centre, Transit, GO Station, Frenchman's Bay & Easy Access To Hwy 401 & 407 * Furnace & Central Air (5 Yrs) Flat Roof (1Yr)

LOT SIZE: 45 x 123 Ft.
TAXES: \$6969.38/2025

www.1825Bronte.com



BANSALTEAM.COM