

SHIV BANSAL TEAM

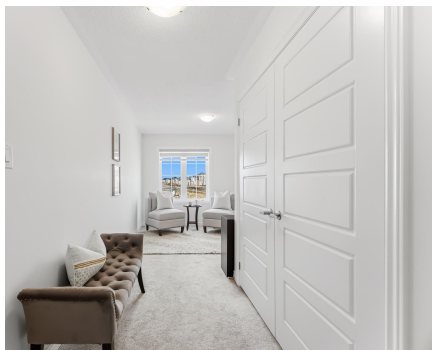
PROFESSIONALS IN REAL ESTATE

DIRECT: 416.396.3550 | SHIV@BANSALTEAM.COM

FOLLOW US ON     BANSALTEAM.COM



Top 5 Team In Canada For Over 20 Years In Century 21



CENTURY 21
Percy Fulton Ltd.

CENTURY 21 PERCY FULTON LTD. BROKERAGE
OFFICE: 416.298.8200

BROKERAGE

THIS IS NOT INTENDED TO SOLICIT BUYERS OR SELLERS CURRENTLY UNDER CONTRACT WITH A BROKERAGE.

11 CISCO DR.

www.11Cisco.com

CENTURY 21

Percy Fulton Ltd.

BROKERAGE



BANSAL TEAM

PROFESSIONALS IN REAL ESTATE

DIRECT: 416.396.3550 | INFO@BANSALTEAM.COM

FOLLOW US ON     BANSALTEAM.COM

CENTURY 21 PERCY FULTON LTD. BROKERAGE

11 CISCO DR.

www.11Cisco.com

BANSAL TEAM
PROFESSIONALS IN REAL ESTATE



WELCOME TO 11 Cisco Drive

4 Bedroom Detached Home In Highly Desirable Rural Whitby Community * Built 2021 * Premium 36 Ft Frontage * Pot Lights At Front & Rear Of Home* Bright Functional Layout Ideal For Families * 9 Ft Ceilings On Main Floor * Living & Dining Room With Hardwood Floors * Modern Kitchen With Granite Counters & Backsplash * Breakfast Area With Walk-Out To Deck * Spacious Primary Bedroom With Walk-In Closet & 4-Piece Ensuite * Second Floor Family Room Providing Extra Living Space * 200 Amp Electrical Panel * Basement With Rough-In * Basement With Larger Windows Providing Excellent Natural Light * Fantastic Opportunity To Own A Newer Home In A Growing Whitby Community*

LOT SIZE: 36.12 x 90.31 Ft.
TAXES: \$9125/2025

www.11Cisco.com



BANSALTEAM.COM