

# SHIV BANSAL TEAM

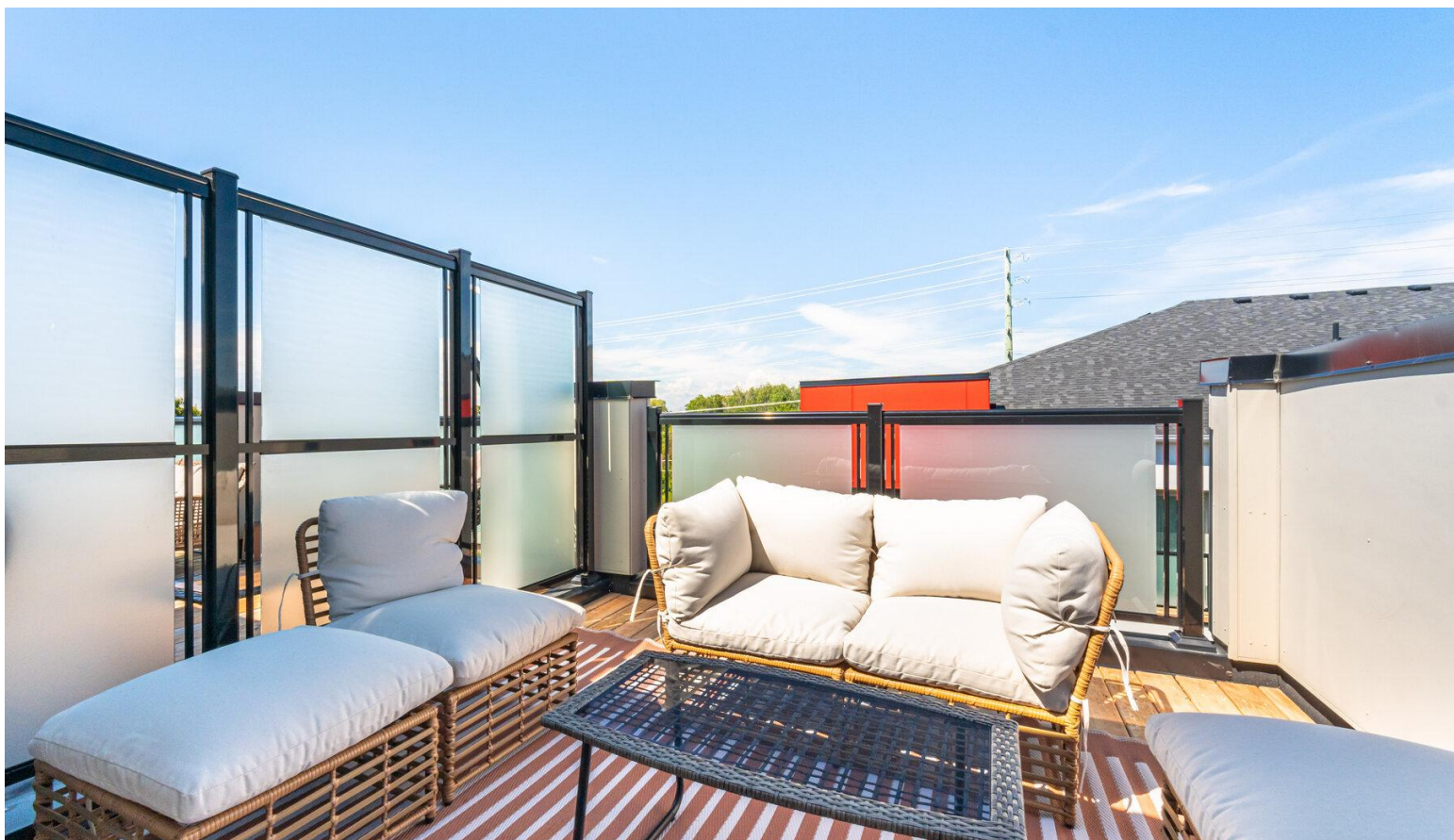
PROFESSIONALS IN REAL ESTATE

DIRECT: 416.396.3550 | SHIV@BANSALTEAM.COM

FOLLOW US ON     BANSALTEAM.COM



Top 5 Team In Canada For Over 20 Years In Century 21



## CENTURY 21

Percy Fulton Ltd.

BROKERAGE

CENTURY 21 PERCY FULTON LTD. BROKERAGE

OFFICE: 416.298.8200

THIS IS NOT INTENDED TO SOLICIT BUYERS OR SELLERS CURRENTLY UNDER CONTRACT WITH A BROKERAGE.

## 1034 Reflection Place #510 CENTURY 21

Percy Fulton Ltd.

BROKERAGE

[www.1034Reflection-510.com](http://www.1034Reflection-510.com)



## BANSAL TEAM

PROFESSIONALS IN REAL ESTATE

DIRECT: 416.396.3550 | INFO@BANSALTEAM.COM

FOLLOW US ON     BANSALTEAM.COM

CENTURY 21 PERCY FULTON LTD. BROKERAGE



1034 Reflection Pl. #510

**BANSAL TEAM**  
— PROFESSIONALS IN REAL ESTATE —

[www.1034Reflection-510.com](http://www.1034Reflection-510.com)



## WELCOME TO 1034 Reflection Pl #510

Immaculate 3 Year Old Condo  
Townhouse in North Pickering \*  
3 Bedrooms \* 3 Baths \* 2  
Balconies Plus Rooftop Terrace  
\* Entrance From Garage \* Oak  
Stairs \* No Carpet \* Quartz  
Counters in Kitchen \* Custom  
Built-In Shelf in the Entrance \*  
Close to Parks, Schools,  
Shopping, Restaurants and  
more

MNTCE FEES: \$409.11/Month  
TAXES: \$5384.84/2025

[www.1034Reflection-510.com](http://www.1034Reflection-510.com)



[BANSALTEAM.COM](http://BANSALTEAM.COM)