

SHIV BANSAL TEAM

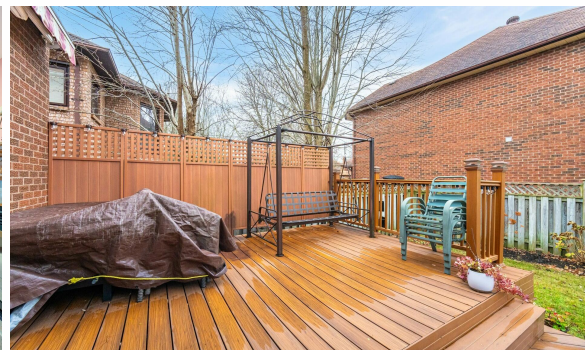
PROFESSIONALS IN REAL ESTATE

DIRECT: 416.396.3550 | SHIV@BANSALTEAM.COM

FOLLOW US ON     BANSALTEAM.COM



Top 5 Team In Canada For Over 20 Years In Century 21



887 Darwin Drive

www.887Darwin.com

CENTURY 21

Percy Fulton Ltd.

BROKERAGE



BANSAL TEAM

PROFESSIONALS IN REAL ESTATE

DIRECT: 416.396.3550 | INFO@BANSALTEAM.COM

FOLLOW US ON     BANSALTEAM.COM

CENTURY 21

CENTURY 21 PERCY FULTON LTD. BROKERAGE

Percy Fulton Ltd.

OFFICE: 416.298.8200

BROKERAGE

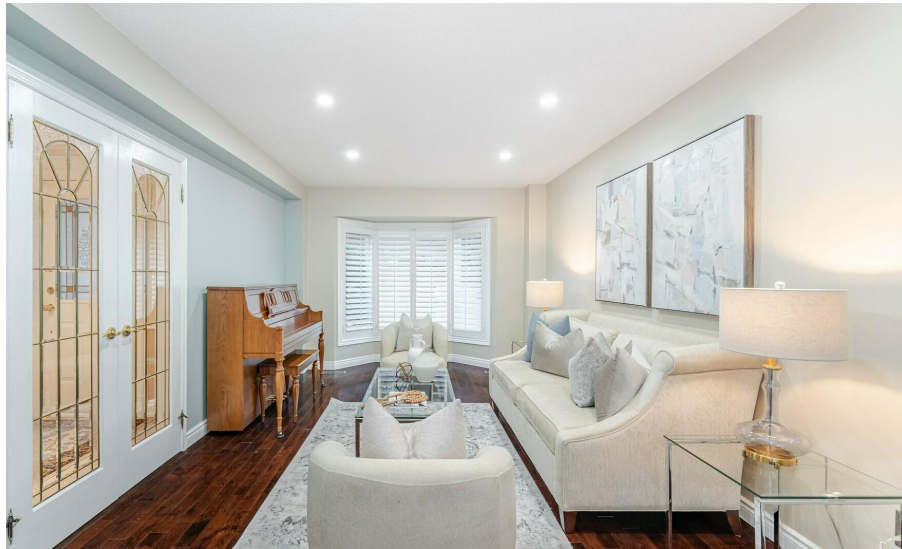
CENTURY 21 PERCY FULTON LTD. BROKERAGE

THIS IS NOT INTENDED TO SOLICIT BUYERS OR SELLERS CURRENTLY UNDER CONTRACT WITH A BROKERAGE.

887 DARWIN DR.

BANSAL TEAM
PROFESSIONALS IN REAL ESTATE

www.887Darwin.com

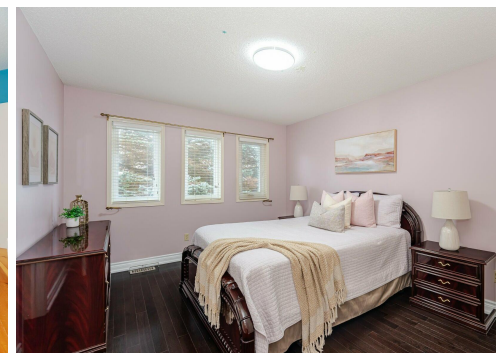
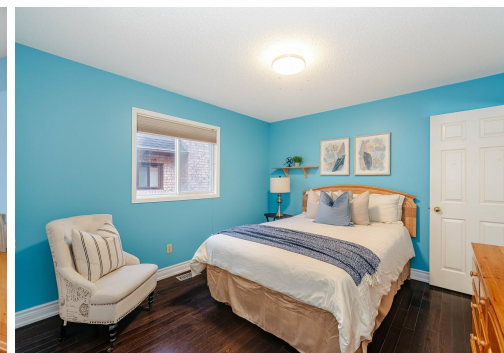
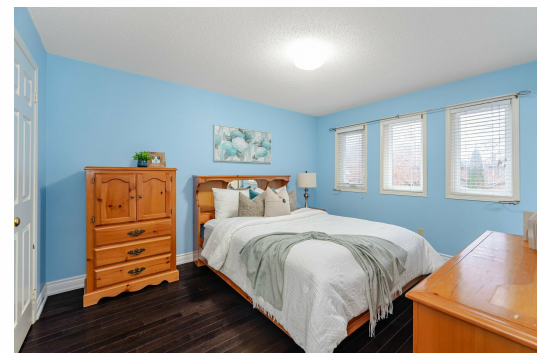
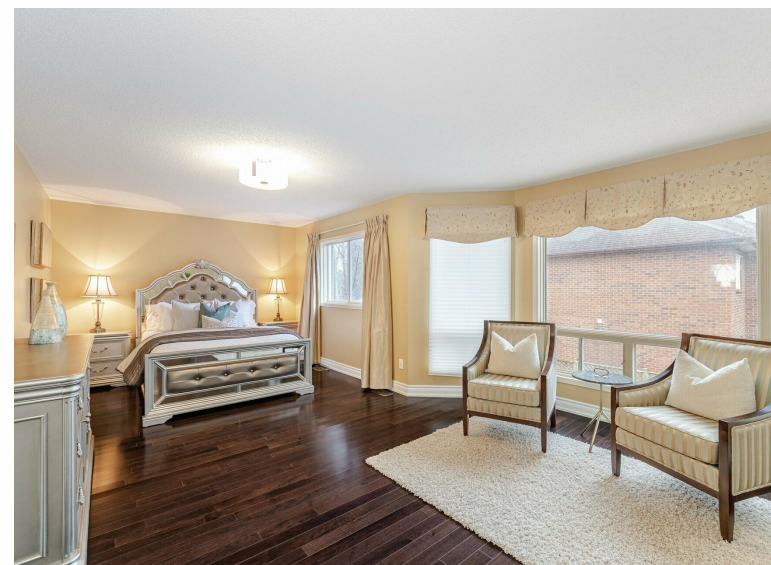
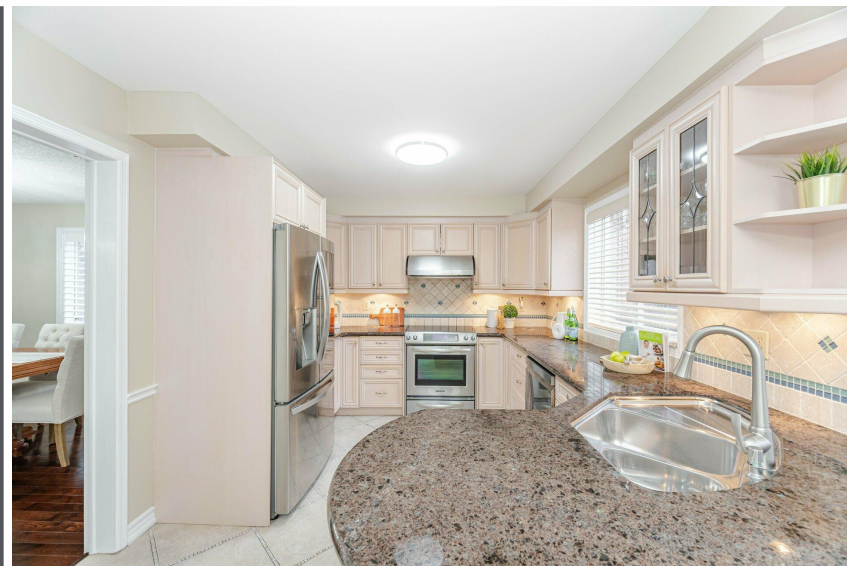


WELCOME TO 887 Darwin Drive

Updated 4+2 Bedroom 4 Bath Home *
Exclusive Coughlan Built Enclave * No
Small Homes in the Area * 71 Ft. Wide
@ Front * Over 2857 Sq. Ft. Plus 1350
Sq. Ft. Basement * Over 4200 Sq. Ft.
Total * Hardwood Floors on Main and
2nd * Curved Oak Stairs with Wrought
Iron Spindles * Open Staircase to
Basement * Updated Bathrooms *
Primary Bedroom Has Sitting Area *
Finished Basement with Rec Room with
Gas Fireplace, 2 Bedrooms, 4 Pc Bath
and Wet Bar * Entrance from Garage *
Interlock Driveway and Front Entrance *
Custom Awning * Large 2-Tier Deck
and Gas Hookup for BBQ * Furnace
and Central Air (1yr) * Roof (10yrs) *

LOT SIZE: 71 x 111 Ft.
TAXES: \$8628.52/2024

www.887Darwin.com



BANSALTEAM.COM