

SHIV BANSAL TEAM

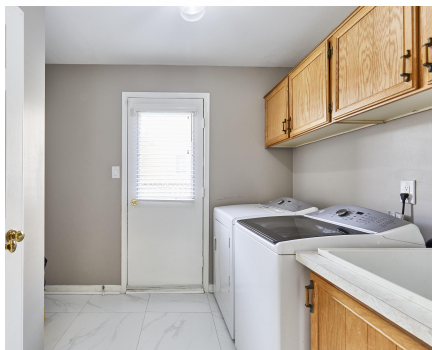
PROFESSIONALS IN REAL ESTATE

DIRECT: 416.396.3550 | SHIV@BANSALTEAM.COM

FOLLOW US ON     BANSALTEAM.COM



Top 5 Team In Canada For Over 20 Years In Century 21



CENTURY 21

Percy Fulton Ltd.

BROKERAGE

CENTURY 21 PERCY FULTON LTD. BROKERAGE

OFFICE: 416.298.8200

THIS IS NOT INTENDED TO SOLICIT BUYERS OR SELLERS CURRENTLY UNDER CONTRACT WITH A BROKERAGE.

1945 ROSEBANK RD.

www.1945Rosebank.com

CENTURY 21

Percy Fulton Ltd.

BROKERAGE



BANSAL TEAM

PROFESSIONALS IN REAL ESTATE

DIRECT: 416.396.3550 | INFO@BANSALTEAM.COM

FOLLOW US ON     BANSALTEAM.COM

CENTURY 21 PERCY FULTON LTD. BROKERAGE

1945 ROSEBANK DR.

www.1945Rosebank.com

BANSAL TEAM
— PROFESSIONALS IN REAL ESTATE —

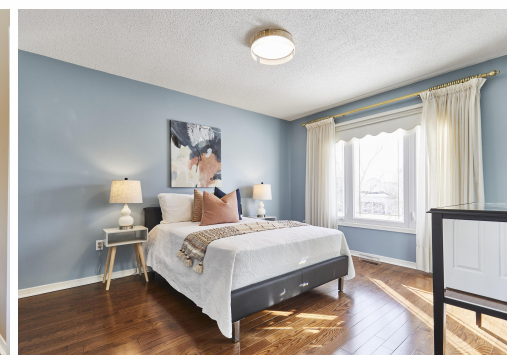
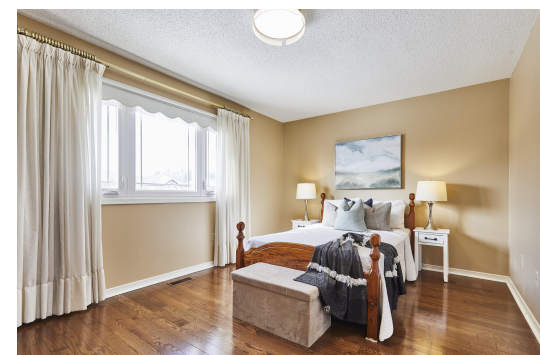


WELCOME TO 1945 Rosebank Drive

Stunning 4 bedroom home in highly sought-after Amberlea community * 52 ft. wide lot * Hardwood floors on both levels * Crown moulding on the main floor * Stylish kitchen with granite counters and pot lights. The main floor office can be converted into a bedroom. Garage access through the laundry room. New heat pump * New Furnace * New deck * 2-year-old roof. Located near top schools, Hwy's 401/407, Transit, shopping, restaurants, and more!

LOT SIZE: 52 x 114 Ft.
TAXES: \$7796.26/2024

www.1945Rosebank.com



BANSALTEAM.COM