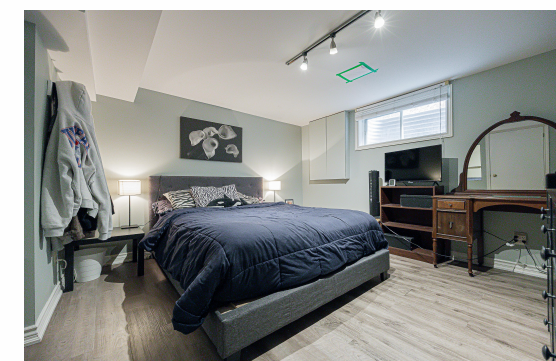




**WELCOME TO**  
**250 HEMLOCK DRIVE,**  
**STOUFFVILLE**



**Go to [www.250Hemlock.com](http://www.250Hemlock.com) for more information.**

**[www.250Hemlock.com](http://www.250Hemlock.com)**



**Michael Andrews**  
Sales Representative  
Direct: 416-587-0041  
Office: 905-471-2121  
[mike.andrews@century21.ca](mailto:mike.andrews@century21.ca)  
[www.mikesmyagent.com](http://www.mikesmyagent.com)

**CENTURY 21.**  
Leading Edge Realty Inc.  
BROKERAGE  
165 Main Street North , Markham,  
L3P 1Y2

**PRESENTED BY**  
**MICHAEL ANDREWS**  
SALES REPRESENTATIVE  
**CENTURY 21.**  
Leading Edge Realty Inc.  
BROKERAGE



\*Independently Owned And Operated. ® ™, trademarks of Century 21 Real Estate LLC, used under license. Not intended to solicit buyers or sellers currently under contract.

