

# SHIV BANSAL TEAM

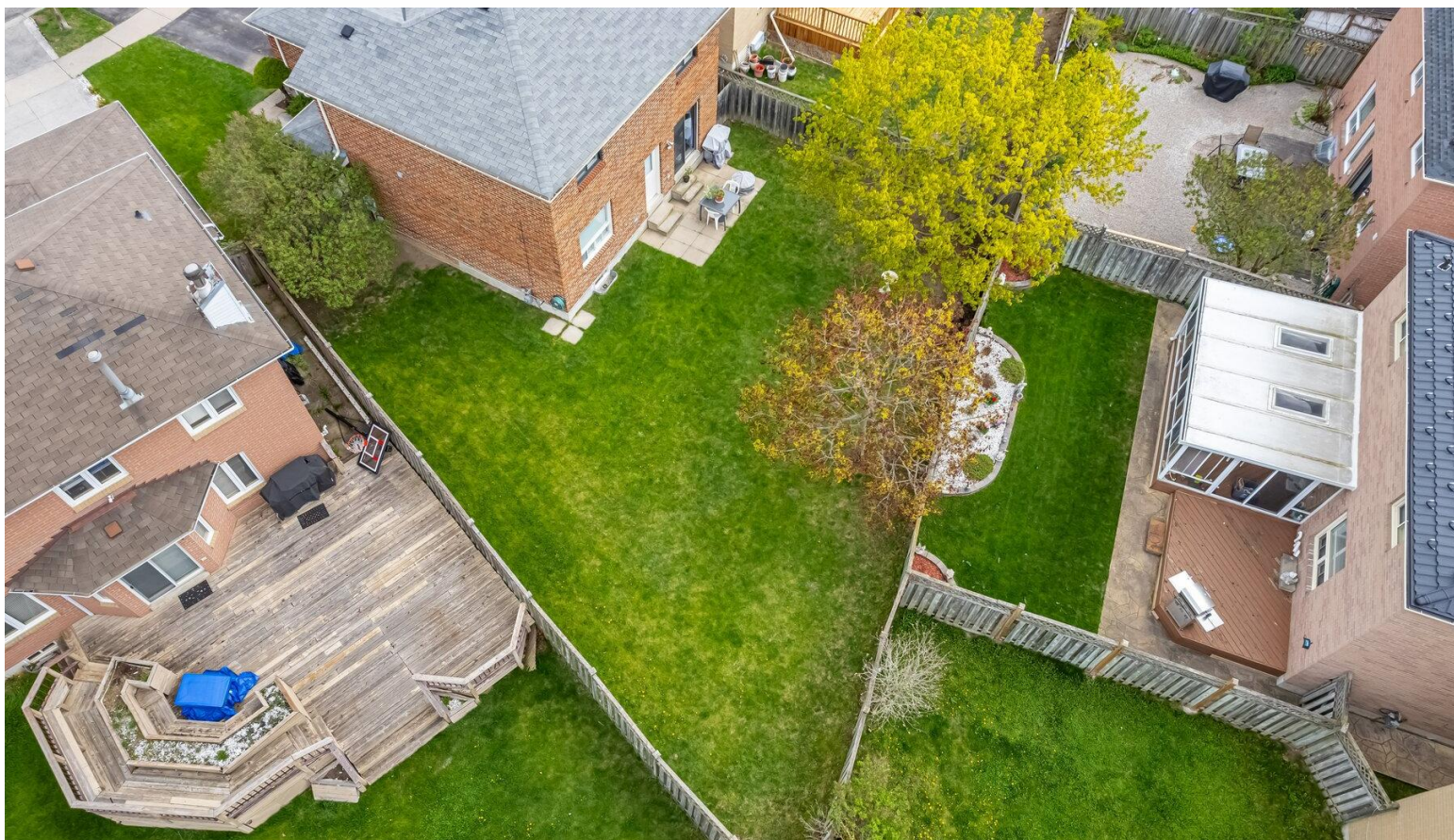
PROFESSIONALS IN REAL ESTATE

DIRECT: 416.396.3550 | SHIV@BANSALTEAM.COM

FOLLOW US ON     BANSALTEAM.COM



Top 5 Team In Canada For Over 20 Years In Century 21



## CENTURY 21

Percy Fulton Ltd.

BROKERAGE

CENTURY 21 PERCY FULTON LTD. BROKERAGE

OFFICE: 416.298.8200

THIS IS NOT INTENDED TO SOLICIT BUYERS OR SELLERS CURRENTLY UNDER CONTRACT WITH A BROKERAGE.

## 28 NOAKE CRES.

[www.28Noake.com](http://www.28Noake.com)

## CENTURY 21

Percy Fulton Ltd.

BROKERAGE



## BANSAL TEAM

PROFESSIONALS IN REAL ESTATE

DIRECT: 416.396.3550 | INFO@BANSALTEAM.COM

FOLLOW US ON     BANSALTEAM.COM

CENTURY 21 PERCY FULTON LTD. BROKERAGE



28 NOAKE CRES.  
www.28Noake.com

BANSAL TEAM  
— PROFESSIONALS IN REAL ESTATE —



## WELCOME TO 28 Noake Crescent

\* 3 Bedroom 3 Bathroom  
Detached Home on a Premium  
Pie Shaped Lot \* Formal Living  
and Dining Area \* Kitchen With  
Walk-out To Private Fenced  
Backyard \* Finished Basement \*  
Close To Parks, Schools, Transit,  
HWY 401, Shops & More \* Roof  
(15 Yrs) \* Replaces All Taps in  
Bathrooms & Kitchen \* Close to  
Schools, Shops, Restaurants and  
Much More \*

LOT SIZE: 29.76 x 158.77 Ft  
TAXES: \$5576.36/2024

www.28Noake.com



BANSALTEAM.COM