

SHIV BANSAL TEAM

— PROFESSIONALS IN REAL ESTATE —

DIRECT: 416.396.3550 | SHIV@BANSALTEAM.COM

FOLLOW US ON     BANSALTEAM.COM



Top 5 Team In Canada For Over 20 Years In Century 21



CENTURY 21

Percy Fulton Ltd.

BROKERAGE

CENTURY 21 PERCY FULTON LTD. BROKERAGE

OFFICE: 416.298.8200

THIS IS NOT INTENDED TO SOLICIT BUYERS OR SELLERS CURRENTLY UNDER CONTRACT WITH A BROKERAGE.

1927 PARKSIDE DR.

www.1927Parkside.com

CENTURY 21

Percy Fulton Ltd.

BROKERAGE



BANSAL TEAM

— PROFESSIONALS IN REAL ESTATE —

DIRECT: 416.396.3550 | INFO@BANSALTEAM.COM

FOLLOW US ON     BANSALTEAM.COM

CENTURY 21 PERCY FULTON LTD. BROKERAGE

1927 PARKSIDE DR.

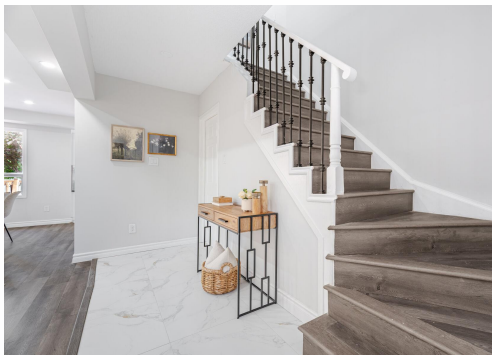
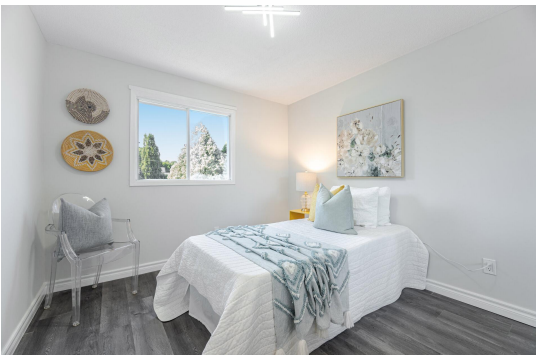
www.1927Parkside.com

BANSAL TEAM
— PROFESSIONALS IN REAL ESTATE —



WELCOME TO 1927 Parkside Drive

Updated 3+1 Bedrooms* 4
Bathrooms * 149 Ft Deep Lot in
Highly Sought after Amberlea
Neighbourhood in Pickering *
Separate Entrance to Basement
Apartment with Rec Rm, Kitchen,
Bedroom and 4 Pc. Bath * Pot
Lights * 2 Car Garage * Close to
Hwy 401/407, Schools, Shops,
Parks and more



LOT SIZE: 31.82 x 149 Ft.
TAXES: \$5789/2024

www.1927Parkside.com

BANSALTEAM.COM