

SHIV BANSAL TEAM

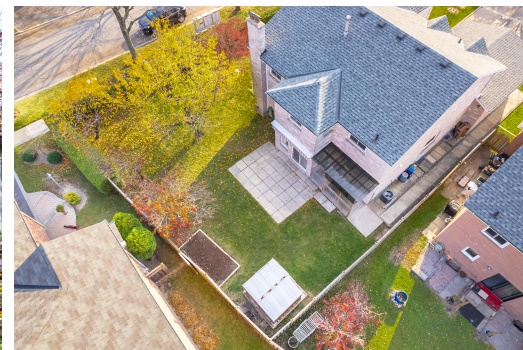
PROFESSIONALS IN REAL ESTATE

DIRECT: 416.396.3550 | SHIV@BANSALTEAM.COM

FOLLOW US ON     BANSALTEAM.COM



Top 5 Team In Canada For Over 20 Years In Century 21



30 WICKENS CRES.

www.30Wickens.com

CENTURY 21

Percy Fulton Ltd.

BROKERAGE



BANSAL TEAM

PROFESSIONALS IN REAL ESTATE

DIRECT: 416.396.3550 | INFO@BANSALTEAM.COM

FOLLOW US ON     BANSALTEAM.COM

CENTURY 21

Percy Fulton Ltd.

BROKERAGE

CENTURY 21 PERCY FULTON LTD. BROKERAGE

OFFICE: 416.298.8200

CENTURY 21 PERCY FULTON LTD. BROKERAGE

THIS IS NOT INTENDED TO SOLICIT BUYERS OR SELLERS CURRENTLY UNDER CONTRACT WITH A BROKERAGE.

30 WICKENS CRES.

www.30Wickens.com

BANSAL TEAM
PROFESSIONALS IN REAL ESTATE



WELCOME TO 30 Wickens Crescent

Totally Renovated * Corner Lot * 4+1 Bedrooms * 5 Baths * 2838 Sq. Ft. * Original Owners * Wainscoting in Main Hallway * Crown Moulding * Hardwood Floors on Main and Second * 3 New Bathrooms * New 24 x 48 Porcelain Tiles * Oak Stairs with Wrought Iron Pickets * Separate Entrance to Basement Apartment with Living Room (8x11 Ft.) , Kitchen, Bedroom, and 4 piece Bath * Also Large Rec Room with 2 piece Bath for Seller's Use * Interlocking Front Walkway * Beautifully Landscaped Property * Close to Hwy 401/407, Schools, Shopping and more * 1/2 the basement reserved for the owner *

LOT SIZE: 66 x 110 Ft.
TAXES: \$7797.05/2024

www.30Wickens.com



BANSALTEAM.COM