

SHIV BANSAL TEAM

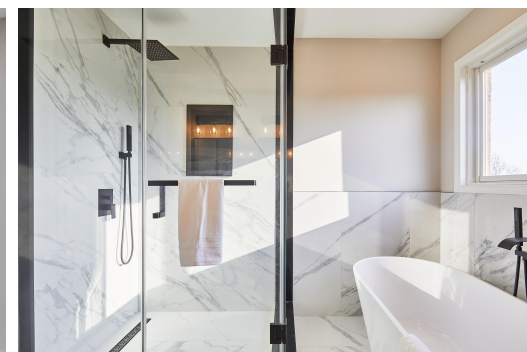
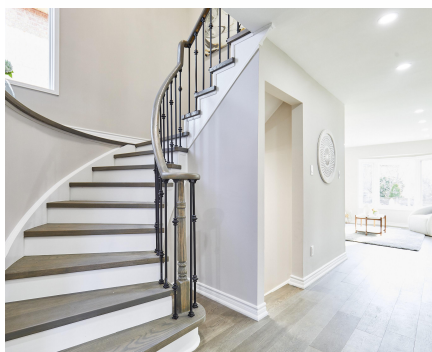
— PROFESSIONALS IN REAL ESTATE —

DIRECT: 416.396.3550 | SHIV@BANSALTEAM.COM

FOLLOW US ON     BANSALTEAM.COM



Top 5 Team In Canada For Over 20 Years In Century 21



CENTURY 21

Percy Fulton Ltd.

BROKERAGE

CENTURY 21 PERCY FULTON LTD. BROKERAGE

OFFICE: 416.298.8200

THIS IS NOT INTENDED TO SOLICIT BUYERS OR SELLERS CURRENTLY UNDER CONTRACT WITH A BROKERAGE.

27 FOREST GROVE DR.

www.27ForestGroveDrive.com

CENTURY 21

Percy Fulton Ltd.

BROKERAGE



BANSAL TEAM

— PROFESSIONALS IN REAL ESTATE —

DIRECT: 416.396.3550 | INFO@BANSALTEAM.COM

FOLLOW US ON     BANSALTEAM.COM

CENTURY 21 PERCY FULTON LTD. BROKERAGE

27 FOREST GROVE DR.

BANSAL TEAM
— PROFESSIONALS IN REAL ESTATE —

www.27ForestGroveDrive.com

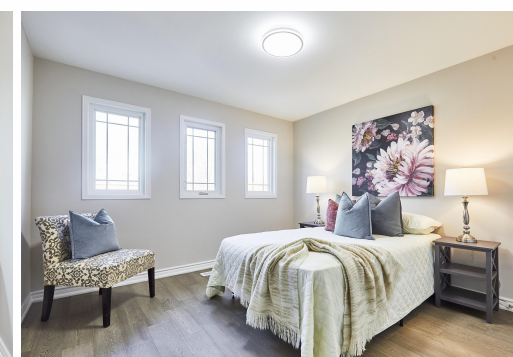
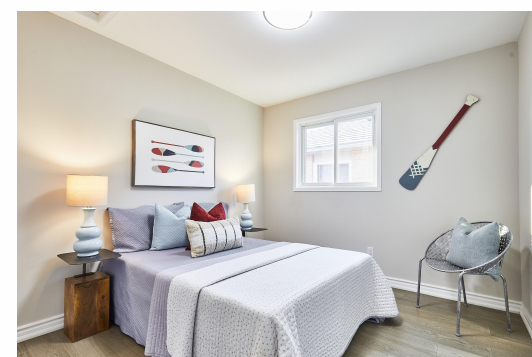


WELCOME TO 27 Forest Grove Drive

* 4 +1 Bedroom 3 Bathroom Detached Home In Pringle Creek Whitby * Totally Renovated * New Hardwood Floors on Main & Second * New Kitchen with Quartz Counters & Backsplash * Breakfast Area with Walk-out to Deck * New Bathrooms * Freshly Painted * Entrance Through Garage * New Oak Stairs With Wrought Iron Pickets * Primary Bedroom With 6 Pc Ensuite * Front Interlock Walkway * Finished Basement With Bedroom, Rec Room, Den and New Vinyl Floors * Steps to Catholic Elementary Schools & Sinclair High School, Parks, Shops, Hwy 401, & More * Furnace & Central Air (8 Yrs) Roof (15 Yrs) * Windows (10 Yrs)

LOT SIZE: 34 X 113 FT
TAXES: \$6693/2024

www.27ForestGroveDrive.com



BANSALTEAM.COM