

# SHIV BANSAL TEAM

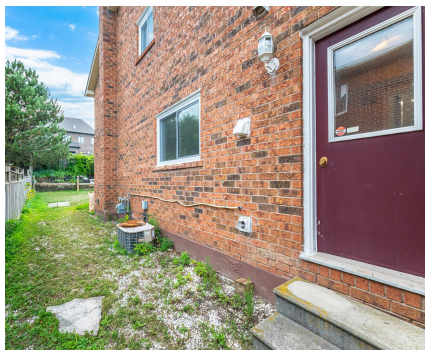
— PROFESSIONALS IN REAL ESTATE —

DIRECT: 416.396.3550 | SHIV@BANSALTEAM.COM

FOLLOW US ON     BANSALTEAM.COM



Top 5 Team In Canada For Over 20 Years In Century 21



**CENTURY 21**  
Percy Fulton Ltd.

CENTURY 21 PERCY FULTON LTD. BROKERAGE  
OFFICE: 416.298.8200

BROKERAGE

THIS IS NOT INTENDED TO SOLICIT BUYERS OR SELLERS CURRENTLY UNDER CONTRACT WITH A BROKERAGE.

## 514 LIGHTFOOT PL.

[www.514Lightfoot.com](http://www.514Lightfoot.com)

## CENTURY 21

Percy Fulton Ltd.

BROKERAGE



## BANSAL TEAM

— PROFESSIONALS IN REAL ESTATE —

DIRECT: 416.396.3550 | INFO@BANSALTEAM.COM

FOLLOW US ON     BANSALTEAM.COM

CENTURY 21 PERCY FULTON LTD. BROKERAGE



514 LIGHTFOOT PL.

[www.514Lightfoot.com](http://www.514Lightfoot.com)

**BANSAL TEAM**  
— PROFESSIONALS IN REAL ESTATE —

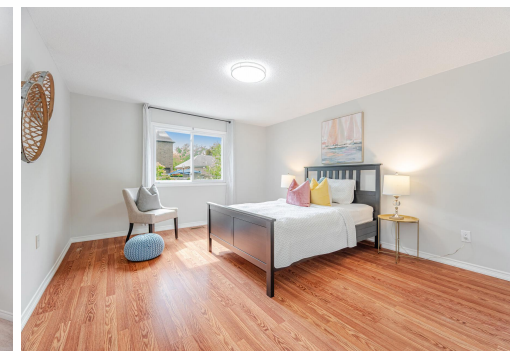


## WELCOME TO 514 Lightfoot Place

4+2 Bedroom 4 Bath Detached  
Home on Premium 55 x 121 Ft  
Lot \* 2688 Sq. Ft. \* Updated  
Kitchen with Quartz Counters \*  
Crown Moulding and Office on  
Main Floor \* Updated  
Bathrooms \* Finished  
Basement with Rec Rm, 2  
Bedrooms and 4 Pc. Bath \*  
Interlock Front Entrance \* Roof  
& Windows (13yrs)

LOT SIZE: 55 x 121 Ft.  
TAXES: \$7935.56/2025

[www.514Lightfoot.com](http://www.514Lightfoot.com)



[BANSALTEAM.COM](http://BANSALTEAM.COM)