

# SHIV BANSAL TEAM

PROFESSIONALS IN REAL ESTATE

DIRECT: 416.396.3550 | SHIV@BANSALTEAM.COM

FOLLOW US ON     BANSALTEAM.COM



Top 5 Team In Canada For Over 20 Years In Century 21



## CENTURY 21

Percy Fulton Ltd.

BROKERAGE

CENTURY 21 PERCY FULTON LTD. BROKERAGE

OFFICE: 416.298.8200

THIS IS NOT INTENDED TO SOLICIT BUYERS OR SELLERS CURRENTLY UNDER CONTRACT WITH A BROKERAGE.

## 939 Duncannon Drive

[www.939Duncannon.com](http://www.939Duncannon.com)

## CENTURY 21

Percy Fulton Ltd.

BROKERAGE



## BANSAL TEAM

PROFESSIONALS IN REAL ESTATE

DIRECT: 416.396.3550 | INFO@BANSALTEAM.COM

FOLLOW US ON     BANSALTEAM.COM

CENTURY 21 PERCY FULTON LTD. BROKERAGE



939 DUNCANNON DR.

[www.939Duncannon.com](http://www.939Duncannon.com)

**BANSAL TEAM**  
— PROFESSIONALS IN REAL ESTATE —

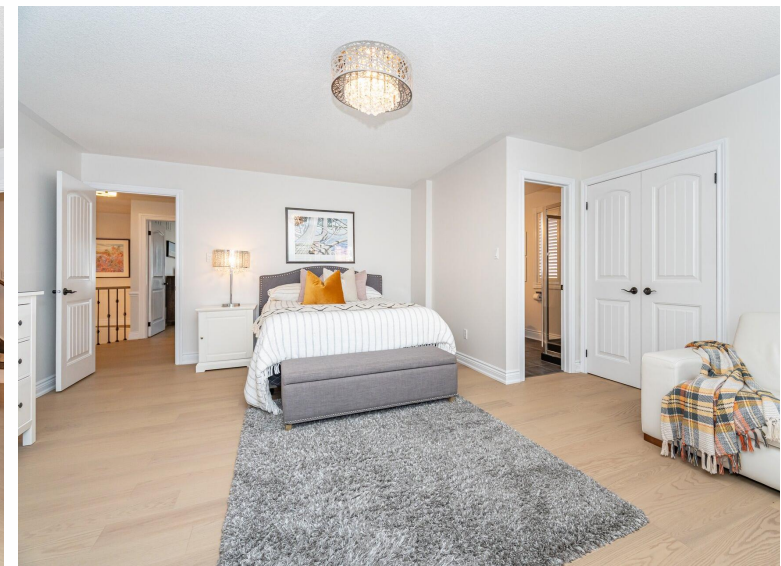


## WELCOME TO 939 Duncannon Drive

Absolutely Stunning \* 4+2 Bedroom 6 Bath  
2-St Plus Loft Home in prestigious  
Pickering Neighbourhood \* 5042 Sq. Ft. \*  
Enjoy Entertaining in the Private Tranquil  
Backyard with 6 Ft Deep Heated Inground  
Salt Water Pool, Large Composite Deck &  
Gazebo with Gas Fireplace \* No Carpet \* 9  
Ft. Ceilings on Main Floor \* 3 Full Baths on  
the 2nd Floor \* New Hardwood Floors \*  
Oak Spiral Stairs w/Wrought Iron Pickets \*  
California Shutters \* Pot Lights \* Crown  
Moulding \* Large Entertainment Room on  
3rd Floor Loft - Great for Families or  
Teenager's Retreat \* Finished Walkout 2  
Bedroom Basement Apartment with  
Kitchen, Dining Rm, Rec Rm, 2nd Laundry  
Room & Bathroom \* Interlock Driveway,  
Entranceway & Front Landscaping

LOT SIZE: 73 x 105.22 Ft.  
TAXES: \$14,312.34/2025

[www.939Duncannon.com](http://www.939Duncannon.com)



[BANSALTEAM.COM](http://BANSALTEAM.COM)