

SHIV BANSAL TEAM

PROFESSIONALS IN REAL ESTATE

DIRECT: 416.396.3550 | SHIV@BANSALTEAM.COM

FOLLOW US ON     BANSALTEAM.COM



Top 5 Team In Canada For Over 20 Years In Century 21

48 KNOWLES DR.

www.48Knowles.com

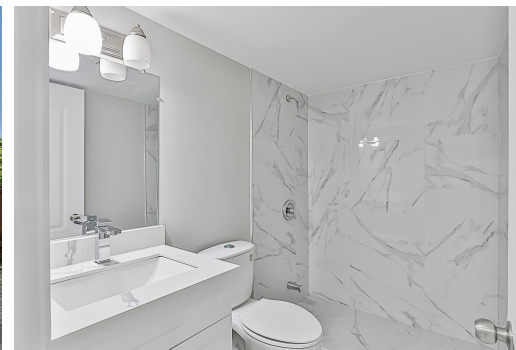
CENTURY 21

Percy Fulton Ltd.

BROKERAGE



Separate Basement Entrance



CENTURY 21

CENTURY 21 PERCY FULTON LTD. BROKERAGE

OFFICE: 416.298.8200

Percy Fulton Ltd.

BROKERAGE

BANSAL TEAM

PROFESSIONALS IN REAL ESTATE

DIRECT: 416.396.3550 | INFO@BANSALTEAM.COM

FOLLOW US ON     BANSALTEAM.COM

CENTURY 21 PERCY FULTON LTD. BROKERAGE

THIS IS NOT INTENDED TO SOLICIT BUYERS OR SELLERS CURRENTLY UNDER CONTRACT WITH A BROKERAGE.

48 KNOWLES DR.

www.48Knowles.com

BANSAL TEAM
PROFESSIONALS IN REAL ESTATE

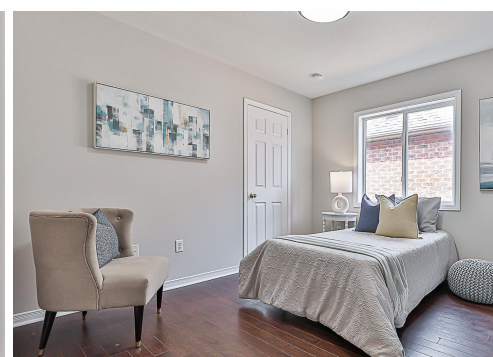
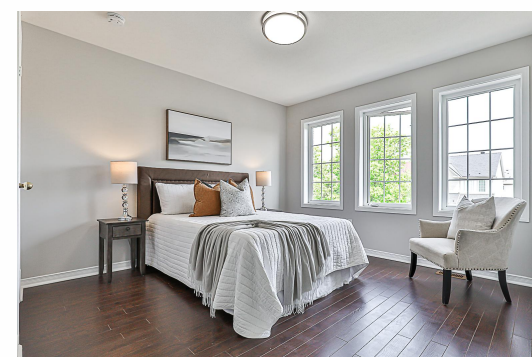
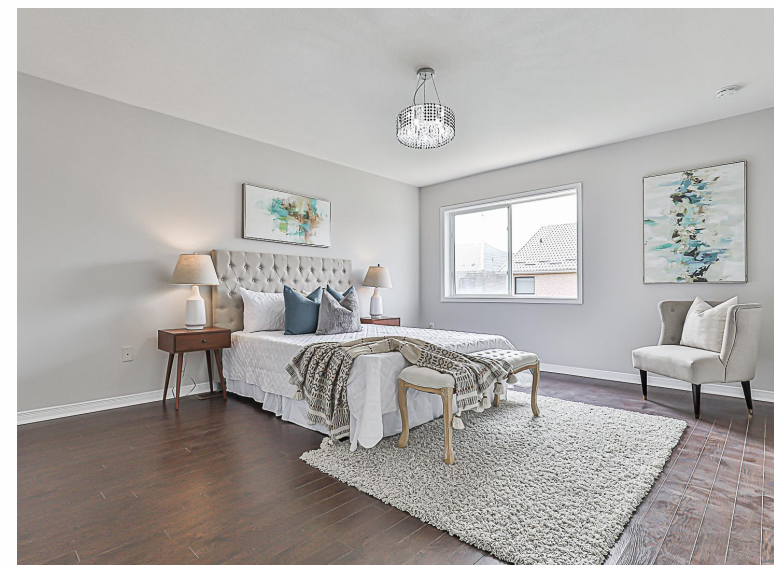


WELCOME TO 48 Knowles Drive

Renovated 4+2 Bedroom 4 Bath *
Open Concept * Updated Bathrooms
* Quartz Counters in Kitchen and
Bathrooms * Separate Entrance to
Updated 2 Bedroom Basement
Apartment with Rec Room, Kitchen
and 4 Piece Bath * Park 4 Cars in
Driveway * No Sidewalk * Main Floor
Laundry * Entrance From Garage *
Hot Water Tank (5 Years) * Furnace
(10 years) * Roof (15 Years) * Close
to Schools, Park, Hwy 401,
Shopping and more

LOT SIZE: 32.43 x 89.07 Ft.
TAXES: \$4434.79/2024

www.48Knowles.com



BANSALTEAM.COM