

SHIV BANSAL TEAM

PROFESSIONALS IN REAL ESTATE

DIRECT: 416.396.3550 | SHIV@BANSALTEAM.COM

FOLLOW US ON     BANSALTEAM.COM



Top 5 Team In Canada For Over 20 Years In Century 21



CENTURY 21
Percy Fulton Ltd.

CENTURY 21 PERCY FULTON LTD. BROKERAGE
OFFICE: 416.298.8200

BROKERAGE

THIS IS NOT INTENDED TO SOLICIT BUYERS OR SELLERS CURRENTLY UNDER CONTRACT WITH A BROKERAGE.

1786 LISTOWELL CRES.

www.1786Listowell.com

CENTURY 21

Percy Fulton Ltd.

BROKERAGE



BANSAL TEAM
PROFESSIONALS IN REAL ESTATE

DIRECT: 416.396.3550 | INFO@BANSALTEAM.COM

FOLLOW US ON     BANSALTEAM.COM

CENTURY 21 PERCY FULTON LTD. BROKERAGE

1786 LISTOWELL CRES.

www.1786Listowell.com

BANSAL TEAM
PROFESSIONALS IN REAL ESTATE

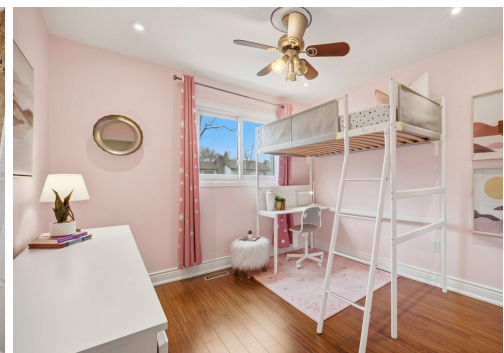
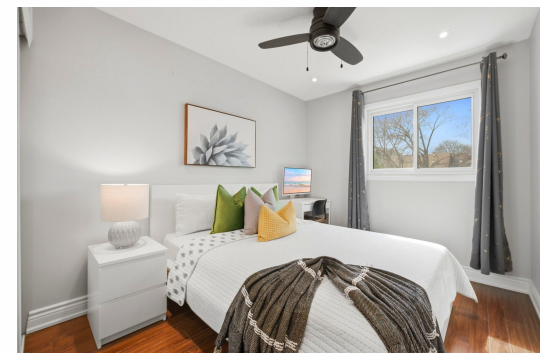


**WELCOME TO
1786 LISTOWELL CRES**

4+1 Bedroom Freehold Townhouse In Highly Desirable Liverpool Community * Bright Open-Concept Living & Dining Area With Fireplace * Modern Kitchen With Updated Cabinetry & Newer Appliances * Upper Level Features 4 Spacious Bedrooms & Private Balcony * Finished Basement With Large Recreation Room, Flexible 5th Bedroom/Office and 3 Piece Bath * Massive Mudroom /Laundry Room With Direct Garage Access * Deck With Awning Overlooking Private Backyard * Roof & Attic Insulation (2023) * Furnace & AC (Under 6 Years) * Prime Family-Friendly Location * Walking Distance To Pickering GO, Pickering Town Centre, Top-Rated Schools, Parks & Trails * Easy Access To Hwy 401 *

**LOT SIZE: 30 X 115 Ft.
TAXES: \$5,578.08/2026**

www.1786Listowell.com



BANSALTEAM.COM