

SHIV BANSAL TEAM

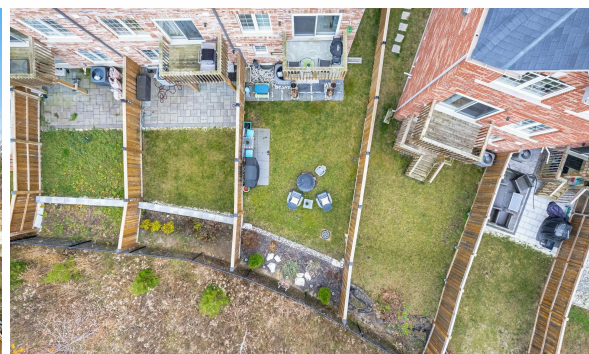
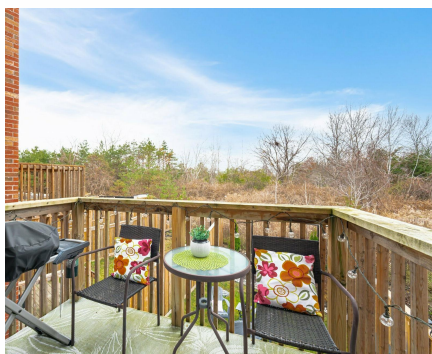
PROFESSIONALS IN REAL ESTATE

DIRECT: 416.396.3550 | SHIV@BANSALTEAM.COM

FOLLOW US ON     BANSALTEAM.COM



Top 5 Team In Canada For Over 20 Years In Century 21



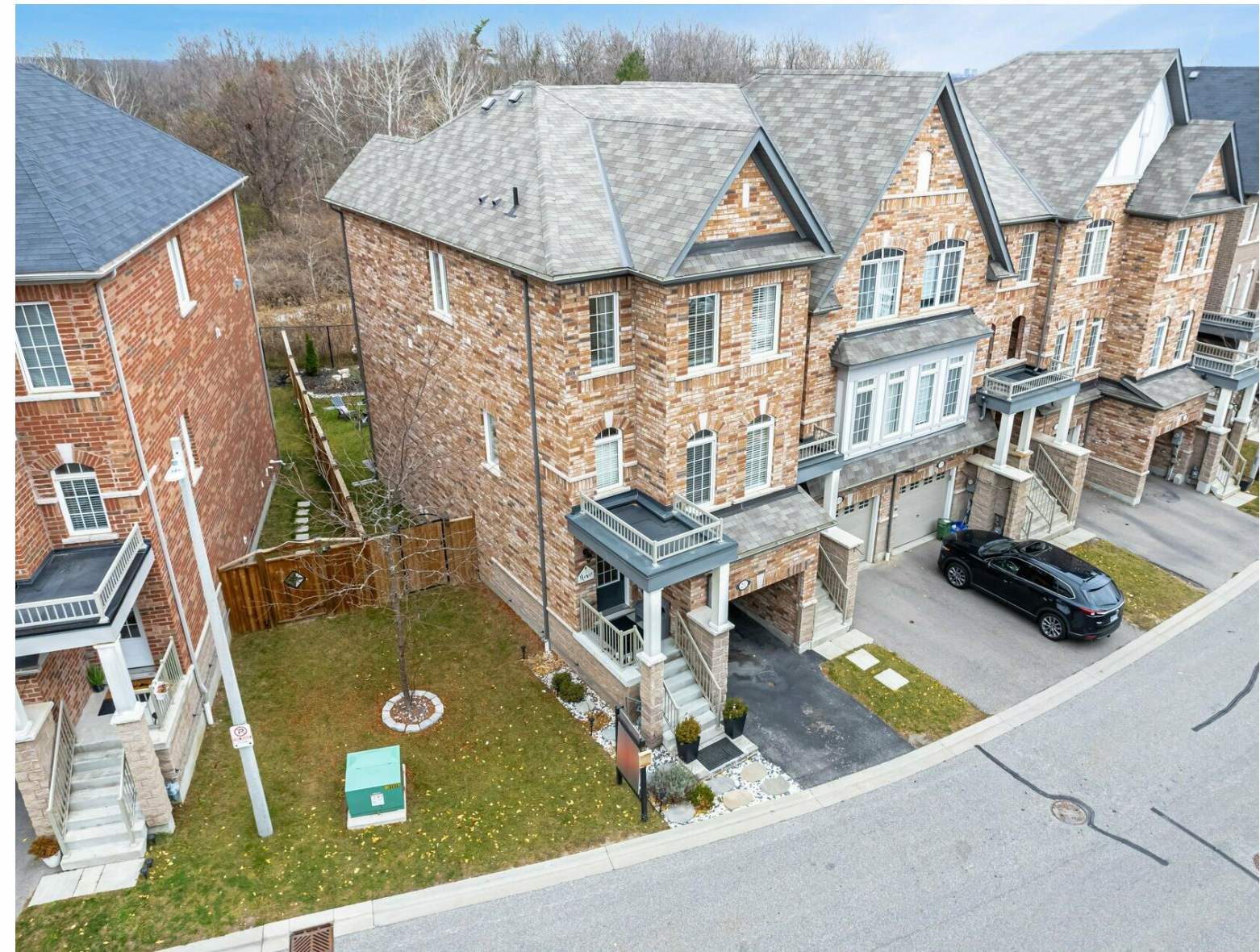
21 GRAYWARDINE LANE

CENTURY 21

Percy Fulton Ltd.

BROKERAGE

www.21Graywardine.com



BANSAL TEAM

PROFESSIONALS IN REAL ESTATE

DIRECT: 416.396.3550 | INFO@BANSALTEAM.COM

FOLLOW US ON     BANSALTEAM.COM

CENTURY 21

CENTURY 21 PERCY FULTON LTD. BROKERAGE

Percy Fulton Ltd.

OFFICE: 416.298.8200

BROKERAGE

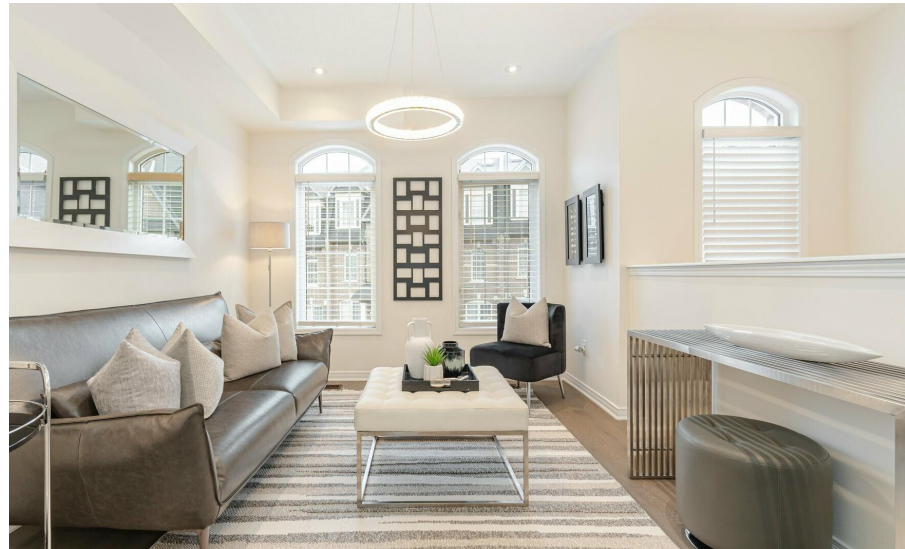
CENTURY 21 PERCY FULTON LTD. BROKERAGE

THIS IS NOT INTENDED TO SOLICIT BUYERS OR SELLERS CURRENTLY UNDER CONTRACT WITH A BROKERAGE.

21 GRAYWARDINE LANE

www.21Graywardine.com

BANSAL TEAM
PROFESSIONALS IN REAL ESTATE

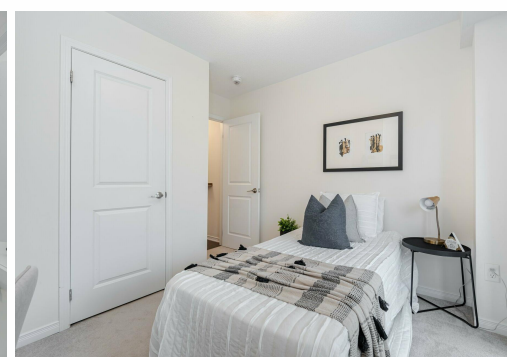
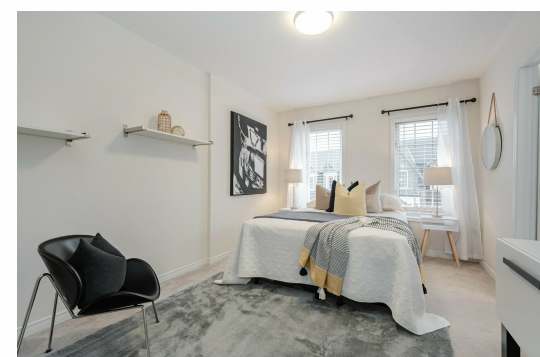
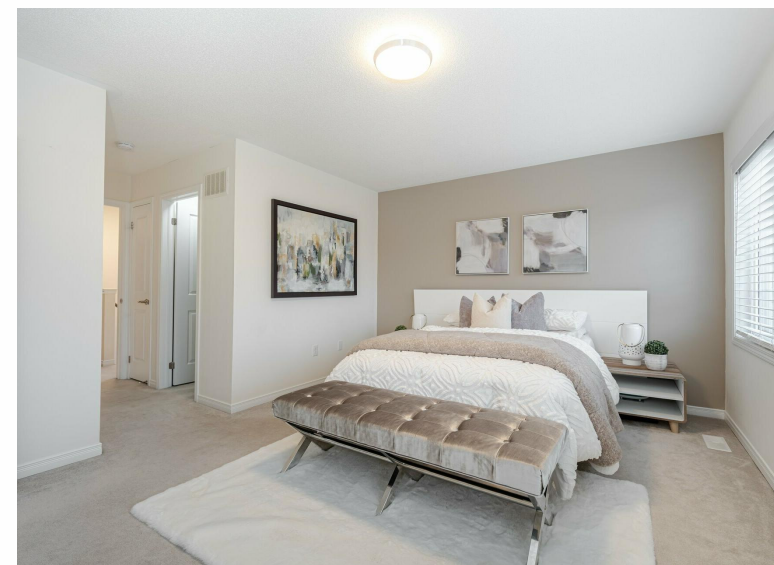
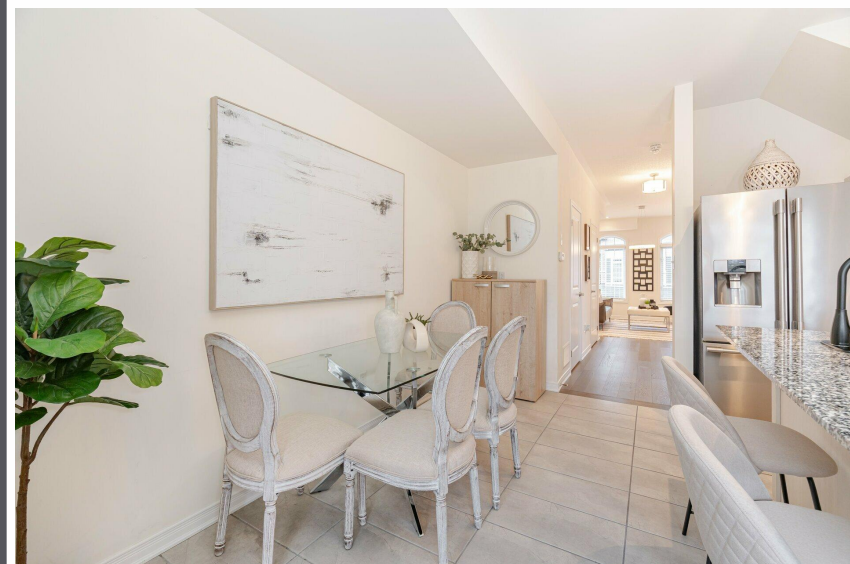
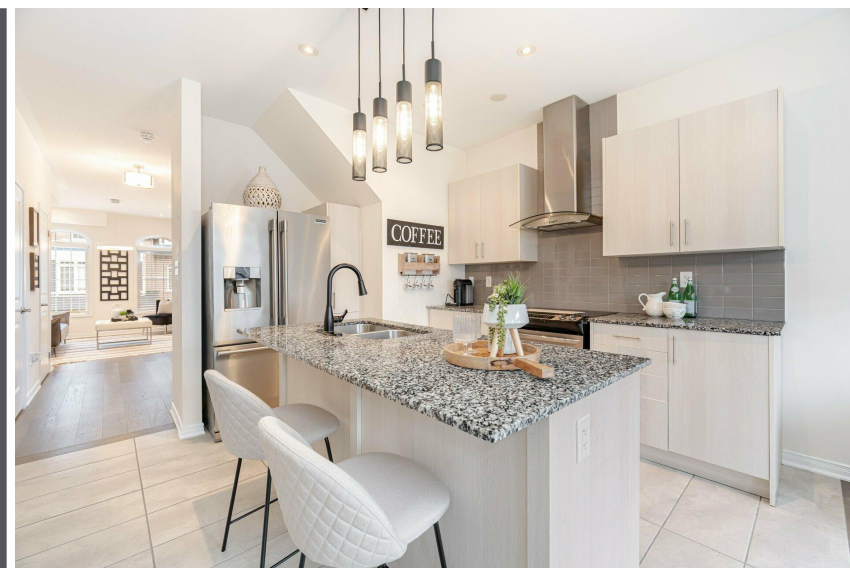


WELCOME TO 21 Graywardine Lane

Bright and Beautiful End Unit Freehold Townhome with a Backyard (Only a few homes in the complex have a backyard) * Backs Onto Green Space * 9 Ft. Ceilings and Engineered Hardwood Floors on Second Floor * Just Under 2000 Sq. Ft. * Beautiful Kitchen with Granite Counters and Ceramic Backsplash * Family Room with Walk-Out to Balcony * Every Bedroom Has Their Own Bathroom * Close to Hwy 401, Trails, Conservation Area, Costco, Go Transit, Schools, Golf Course and more. POTL Fees include Snow Removal, Garbage Pick Up and Landscaping

LOT SIZE: 31 x 97 Ft.
TAXES: \$6650/2024

www.21Graywardine.com



BANSALTEAM.COM