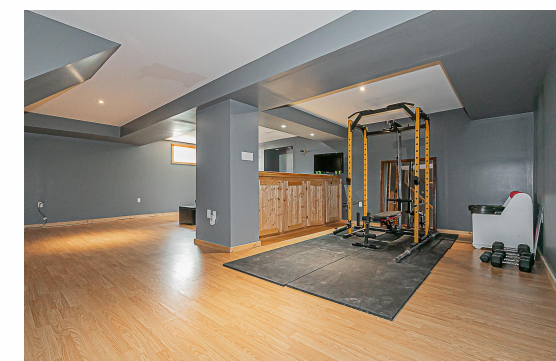
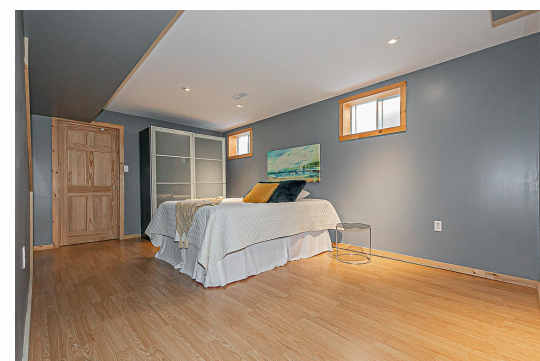




WELCOME TO
231 GEOFFREY CRESCENT,
STOUFFVILLE



LOT 55' x 105' - North Facing - Lots of Sunshine



Go to www.231Geoffrey.com for more information.

www.231Geoffrey.com



Cathy Coker
Sales Representative

Direct: 416-816-5582
Office: 905-471-2121
cathy.coker@c21.ca

<https://cathycoker.com>



CENTURY 21
Leading Edge Realty Inc.
BROKERAGE

165 Main Street North , Markham, L3P 1Y2

LISTED BY
CATHY COKER
SALES REPRESENTATIVE



CENTURY 21
Leading Edge Realty Inc.
BROKERAGE



*Independently Owned And Operated. ® ™, trademarks of Century 21 Real Estate LLC, used under license. Not intended to solicit buyers or sellers currently under contract.

