

SHIV BANSAL TEAM

PROFESSIONALS IN REAL ESTATE

DIRECT: 416.396.3550 | SHIV@BANSALTEAM.COM

FOLLOW US ON     BANSALTEAM.COM



Top 5 Team In Canada For Over 20 Years In Century 21



1621 Gandalf Court

www.1621Gandalf.com

CENTURY 21

Percy Fulton Ltd.

BROKERAGE



BANSAL TEAM

PROFESSIONALS IN REAL ESTATE

DIRECT: 416.396.3550 | INFO@BANSALTEAM.COM

FOLLOW US ON     BANSALTEAM.COM

CENTURY 21

CENTURY 21 PERCY FULTON LTD. BROKERAGE

Percy Fulton Ltd.

OFFICE: 416.298.8200

BROKERAGE

CENTURY 21 PERCY FULTON LTD. BROKERAGE

THIS IS NOT INTENDED TO SOLICIT BUYERS OR SELLERS CURRENTLY UNDER CONTRACT WITH A BROKERAGE.

1621 GANDALF COURT

www.1621Gandalf.com

BANSAL TEAM
PROFESSIONALS IN REAL ESTATE

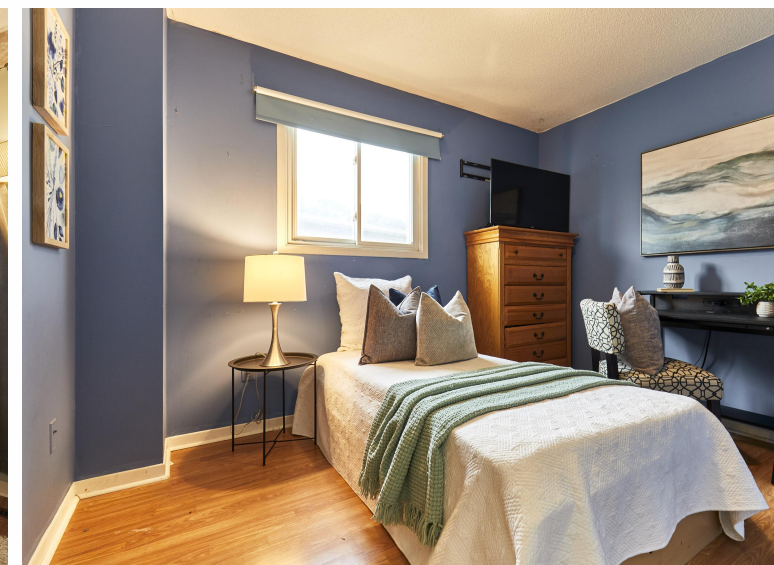


WELCOME TO 1621 Gandalf Court

3+1 Bedrooms * 4 Baths *
Updated Kitchen with Granite
Counters * Crown Moulding in
Living and Dining Room *
Separate Entrance to Walk-Out
Basement Apartment with Rec
Rm, Kitchen, Bedroom and 3 Pc
Bath * New Roof * (Central Air
3yrs), (Furnace & HWT 7yrs) *
Close to Hwy 401, Shopping,
Public Transit, Schools, Mosque,
Restaurants and more.

LOT SIZE: 21 x 125 Ft.
REAR: 40 Ft. Wide
TAXES: \$4800/2023

www.1621Gandalf.com



BANSALTEAM.COM