

# SHIV BANSAL TEAM

PROFESSIONALS IN REAL ESTATE

DIRECT: 416.396.3550 | SHIV@BANSALTEAM.COM

FOLLOW US ON     BANSALTEAM.COM



Top 5 Team In Canada For Over 20 Years In Century 21



**CENTURY 21**  
Percy Fulton Ltd.

CENTURY 21 PERCY FULTON LTD. BROKERAGE  
OFFICE: 416.298.8200

BROKERAGE

THIS IS NOT INTENDED TO SOLICIT BUYERS OR SELLERS CURRENTLY UNDER CONTRACT WITH A BROKERAGE.

## 8 BAILEY CRES.

[www.8Bailey.com](http://www.8Bailey.com)

## CENTURY 21

Percy Fulton Ltd.

BROKERAGE



# BANSAL TEAM

PROFESSIONALS IN REAL ESTATE

DIRECT: 416.396.3550 | INFO@BANSALTEAM.COM

FOLLOW US ON     BANSALTEAM.COM

CENTURY 21 PERCY FULTON LTD. BROKERAGE



8 BAILEY CRES.

[www.8Bailey.com](http://www.8Bailey.com)

**BANSAL TEAM**  
PROFESSIONALS IN REAL ESTATE

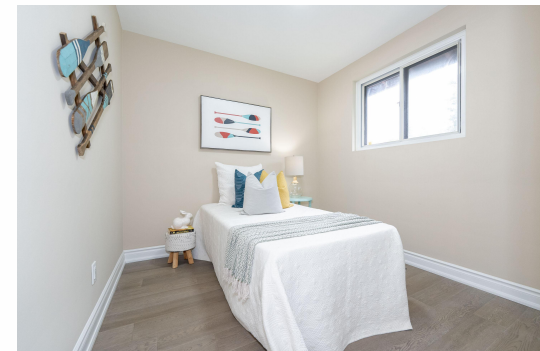


## WELCOME TO 8 Bailey Crescent

Totally Updated 3 Bedroom Bungalow \* Hardwood Floors Thru-Out \* Vinyl Floor in Basement \* Separate Side Entrance to Finished Basement In-Law Suite with Kitchen, Rec Rm and 4 pc. Bath \* 2 New Kitchens with Quartz Counters and Backsplash \* 7 New Appliances \* Updated Bathrooms \* Updated Flooring \* All New Doors \* Pot Lights \* 200 Amp Panel

LOT SIZE: 45 x 113 Ft.  
TAXES: \$3647.98/2024

[www.8Bailey.com](http://www.8Bailey.com)



[BANSALTEAM.COM](http://BANSALTEAM.COM)