

SHIV BANSAL TEAM

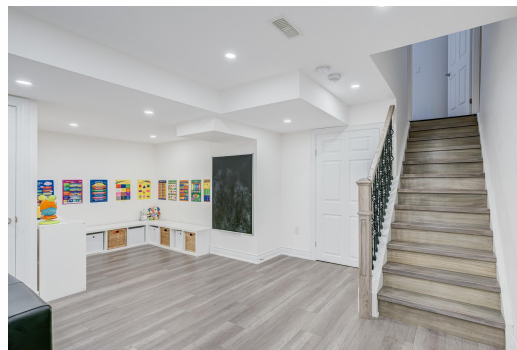
PROFESSIONALS IN REAL ESTATE

DIRECT: 416.396.3550 | SHIV@BANSALTEAM.COM

FOLLOW US ON     BANSALTEAM.COM



Top 5 Team In Canada For Over 20 Years In Century 21



1965 ALTONA ROAD #24

CENTURY 21

Percy Fulton Ltd.

BROKERAGE

www.1965Altona-24.com



BANSAL TEAM

PROFESSIONALS IN REAL ESTATE

DIRECT: 416.396.3550 | INFO@BANSALTEAM.COM

FOLLOW US ON     BANSALTEAM.COM

CENTURY 21

CENTURY 21 PERCY FULTON LTD. BROKERAGE

Percy Fulton Ltd.

OFFICE: 416.298.8200

BROKERAGE

CENTURY 21 PERCY FULTON LTD. BROKERAGE

THIS IS NOT INTENDED TO SOLICIT BUYERS OR SELLERS CURRENTLY UNDER CONTRACT WITH A BROKERAGE.

1965 ALTONA RD #24

www.1965Altona-24.com

BANSAL TEAM
PROFESSIONALS IN REAL ESTATE



**WELCOME TO
1965 ALTONA Road #24**

Beautiful Townhome In Desirable Rouge Park Community * Built In 2017 * Bright & Spacious 3 Bedroom, 4 Bathroom Home * Open Concept Living & Dining Area Featuring Hardwood Floors & Electric Fireplace * Oak Stairs With Wrought Iron Spindles* Modern Kitchen With Quartz Countertops & Pot Lights * Breakfast Area With Walk-Out To Backyard * Primary Retreat With Walk-In Closet & 6-Pc Ensuite * Finished Basement With Large Recreation Room, Pot Lights & 2-Pc Bathroom * Convenient Interior Access From Garage* Interlock Landscaping In Both Front & Backyard * No Grass to Cut In Backyard* Family-Friendly Neighbourhood Close To Parks, Schools, Shopping, Transit, Rouge National Urban Park & Easy Access To Major Highways * Ideal Opportunity For First-Time Buyers, Growing Families Or Investors.

LOT SIZE: 19.69 x 90.42 Ft
TAXES: \$6,405.61/2026
POTL: \$165.75/Mnth

www.1965Altona-24.com



BANSALTEAM.COM