

SHIV BANSAL TEAM

PROFESSIONALS IN REAL ESTATE

DIRECT: 416.396.3550 | SHIV@BANSALTEAM.COM

FOLLOW US ON     BANSALTEAM.COM



Top 5 Team In Canada For Over 20 Years In Century 21



1301 WOODSTREAM AVE. CENTURY 21

Percy Fulton Ltd.

www.1301Woodstream.com

BROKERAGE



BANSAL TEAM

PROFESSIONALS IN REAL ESTATE

DIRECT: 416.396.3550 | INFO@BANSALTEAM.COM

FOLLOW US ON     BANSALTEAM.COM

CENTURY 21

CENTURY 21 PERCY FULTON LTD. BROKERAGE

Percy Fulton Ltd.

OFFICE: 416.298.8200

BROKERAGE

CENTURY 21 PERCY FULTON LTD. BROKERAGE

THIS IS NOT INTENDED TO SOLICIT BUYERS OR SELLERS CURRENTLY UNDER CONTRACT WITH A BROKERAGE.

1301 WOODSTREAM AVE.

www.1301Woodstream.com

BANSAL TEAM
PROFESSIONALS IN REAL ESTATE

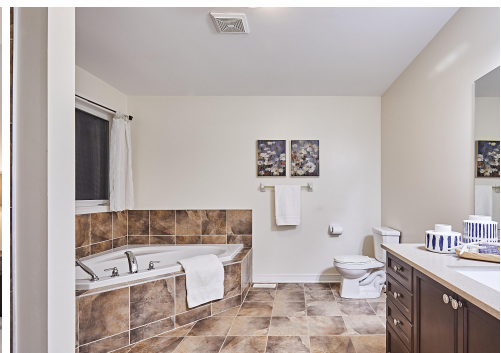


WELCOME TO 1301 Woodstream Avenue

Great Gulf Built * Corner 50 Ft. Lot * Sun Filled Home * 4 Bedrooms * 3 Baths on 2nd Floor * Wrap Around Porch * 20 Ft. Ceiling in Foyer * 9 Ft. Ceilings and Hardwood Floors on Main * Oak Stairs * California Shutters Thru-Out * Interior & Exterior Pot Lights * Beautifully Landscaped Yard with Gazebo, Pergola and Perennials * Entrance to Garage * New (Furnace, Tankless Water Heater), Metal Roof (5 yrs), Central Air (10yrs) * Close to Schools, Transit, Shopping, Durham College, Hwy 407 and more

LOT SIZE: 48.95 x 110 Ft.
TAXES: \$8275.24/2023

www.1301Woodstream.com



BANSALTEAM.COM