

# SHIV BANSAL TEAM

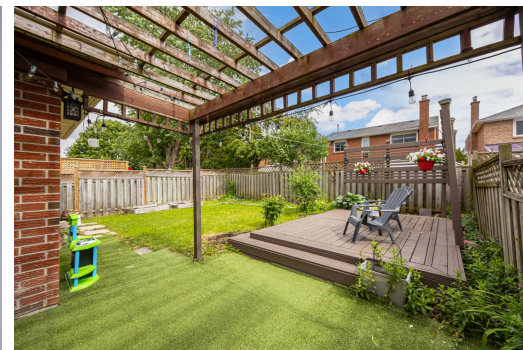
PROFESSIONALS IN REAL ESTATE

DIRECT: 416.396.3550 | SHIV@BANSALTEAM.COM

FOLLOW US ON     BANSALTEAM.COM



Top 5 Team In Canada For Over 20 Years In Century 21



## 611 CHIRON CRES.

[www.611Chiron.com](http://www.611Chiron.com)

## CENTURY 21

Percy Fulton Ltd.

BROKERAGE



# BANSAL TEAM

PROFESSIONALS IN REAL ESTATE

DIRECT: 416.396.3550 | [INFO@BANSALTEAM.COM](mailto:INFO@BANSALTEAM.COM)

FOLLOW US ON     BANSALTEAM.COM

## CENTURY 21

CENTURY 21 PERCY FULTON LTD. BROKERAGE

Percy Fulton Ltd.

OFFICE: 416.298.8200

BROKERAGE

CENTURY 21 PERCY FULTON LTD. BROKERAGE

THIS IS NOT INTENDED TO SOLICIT BUYERS OR SELLERS CURRENTLY UNDER CONTRACT WITH A BROKERAGE.

611 CHIRON CRES.

www.611Chiron.com

**BANSAL TEAM**  
PROFESSIONALS IN REAL ESTATE



## WELCOME TO 611 Chiron Crescent

Newly Renovated Detached Home In Highly Desirable Amberlea Community \* 1901 Sq Ft \* Carpet-Free Home\* 3+2 Bedrooms & 4 Bathrooms \* Freshly Painted Throughout \* New Oak Stairs With Metal Spindles \* Hardwood Floors on Main & Second \* Updated Washrooms With New Toilets \* Living & Dining Rooms With Crown Moulding \* Family Room With Gas Fireplace \* Renovated Kitchen With Quartz Counters, New Tile Floor, New Backsplash \* Primary Retreat With Walk-In Closet & 4-Piece Ensuite \* Finished Basement Featuring Separate Kitchen, 2 Bedrooms, Large Recreation Area & 3-Piece Bath \* Garage With Convenient Interior Access \* Close To Top-Rated Schools, Parks, Shopping, Transit, Recreation Facilities & Easy Access To Major Highways. ( Central Air 5 yrs) ( Roof 8 yrs) (Furnace 10 yrs)

LOT SIZE: 36.58 x 98.43 Ft.  
TAXES: \$6917/2025

www.611Chiron.com



BANSALTEAM.COM