

SHIV BANSAL TEAM

PROFESSIONALS IN REAL ESTATE

DIRECT: 416.396.3550 | SHIV@BANSALTEAM.COM

FOLLOW US ON     BANSALTEAM.COM



Top 5 Team In Canada For Over 20 Years In Century 21



CENTURY 21[®]
Percy Fulton Ltd.

CENTURY 21 PERCY FULTON LTD. BROKERAGE
OFFICE: 416.298.8200

BROKERAGE

THIS IS NOT INTENDED TO SOLICIT BUYERS OR SELLERS CURRENTLY UNDER CONTRACT WITH A BROKERAGE.

35 MARKWOOD CRES

www.35Markwood.com

CENTURY 21[®]

Percy Fulton Ltd.

BROKERAGE



BANSAL TEAM

PROFESSIONALS IN REAL ESTATE

DIRECT: 416.396.3550 | INFO@BANSALTEAM.COM

FOLLOW US ON     BANSALTEAM.COM

CENTURY 21 PERCY FULTON LTD. BROKERAGE

35 MARKWOOD CRES
www.35Markwood.com

BANSAL TEAM
— PROFESSIONALS IN REAL ESTATE —

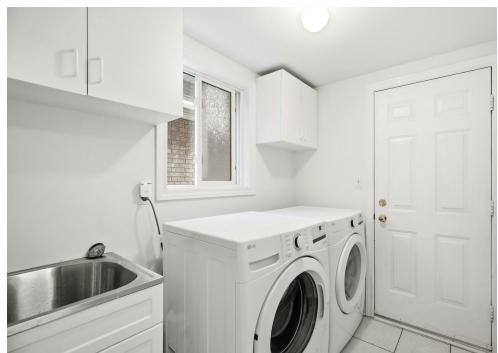
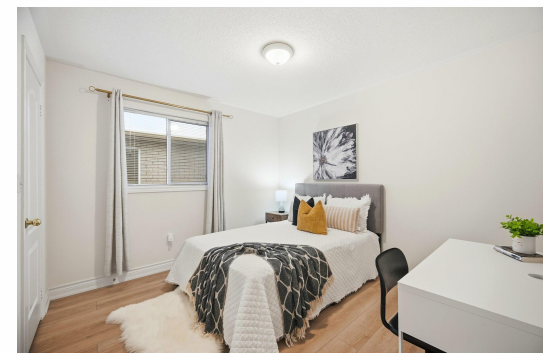
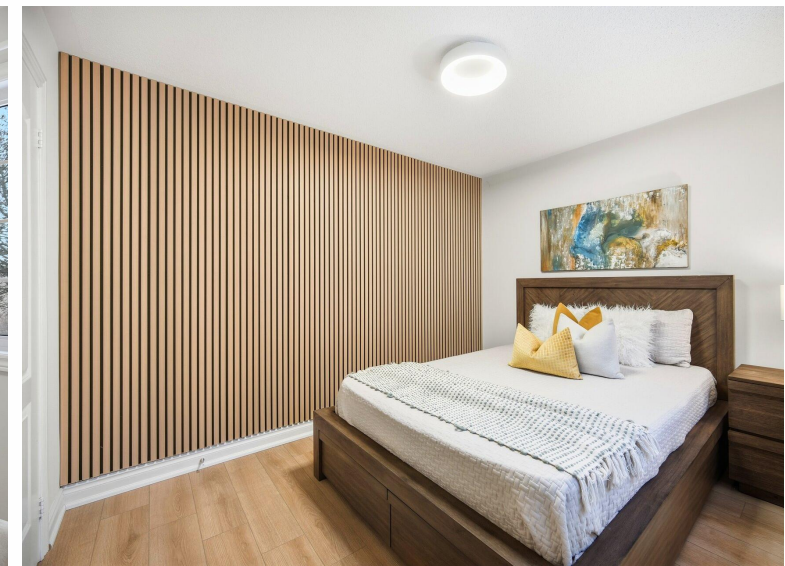


WELCOME TO 35 Markwood Crescent

3+2 Bedroom 4 Bath Detached Home
in Desirable Rolling Acres Community
* Backs Onto Ravine * Freshly
Painted * 1,811 Sq Ft* Family Room
with Gas Fireplace * Modern Kitchen
with Quartz Counters & Walk-Out to
Deck * New Oak Stairs with Wrought
Iron Pickets * Recently Finished 2
Bedroom Basement Apartment * No
Separate Entrance * Seller Will Install
Kitchen at Buyer's Request * Entrance
From Garage * Main Floor Laundry *
6 Parking Spaces * Close to Schools,
Parks, Shopping & Transit * Easy
Access to Hwy 401/407/412 * Roof
(12 yrs) Furnace (13yrs)

LOT SIZE: 34.45x127.51 Ft
TAXES: \$9082.10/2025

www.35Markwood.com



BANSALTEAM.COM