

SHIV BANSAL TEAM

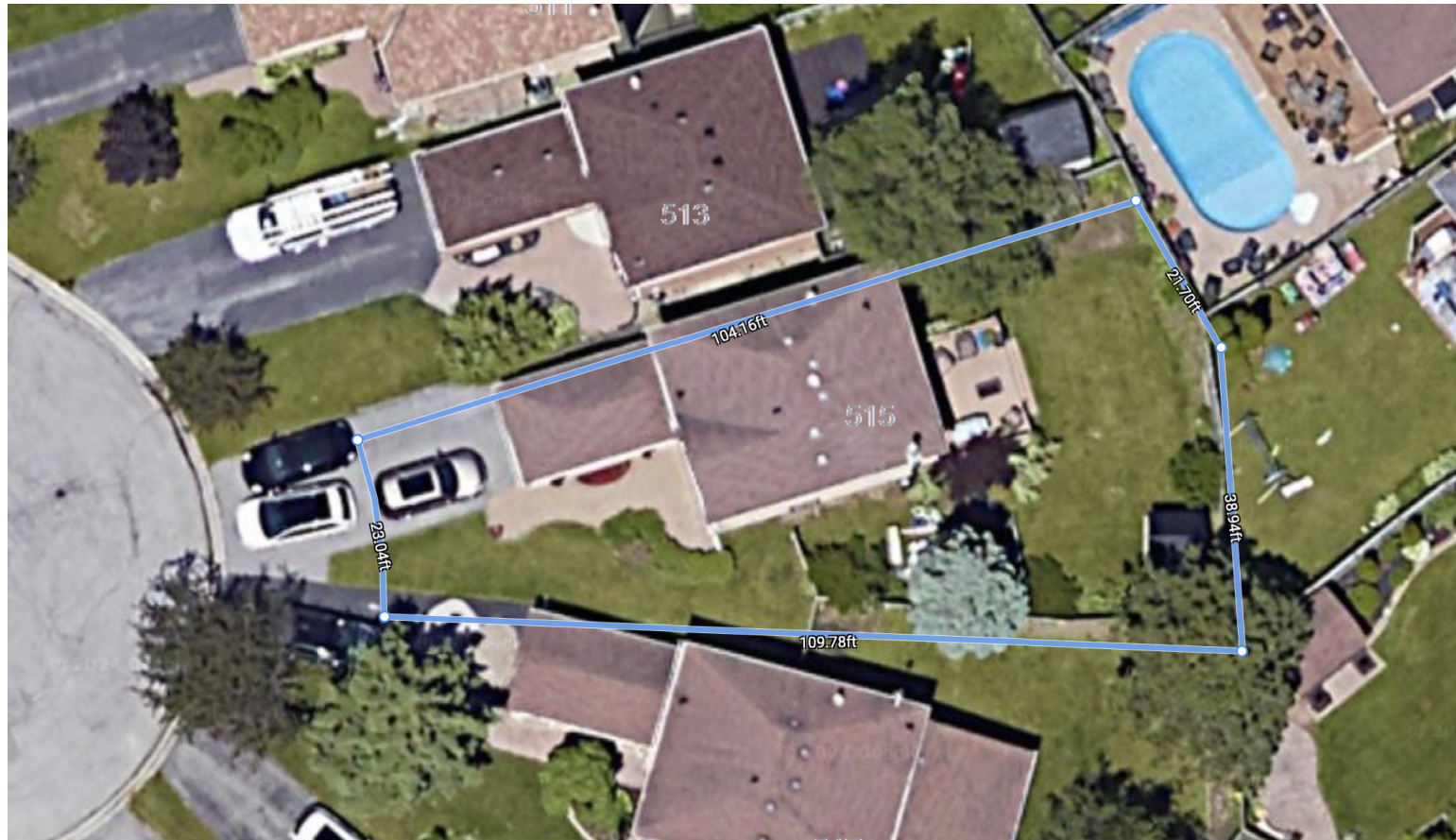
PROFESSIONALS IN REAL ESTATE

DIRECT: 416.396.3550 | SHIV@BANSALTEAM.COM

FOLLOW US ON     BANSALTEAM.COM



Top 5 Team In Canada For Over 20 Years In Century 21



515 ALDER COURT

www.515AlderCourt.com

CENTURY 21

Percy Fulton Ltd.

BROKERAGE



BANSAL TEAM

PROFESSIONALS IN REAL ESTATE

DIRECT: 416.396.3550 | INFO@BANSALTEAM.COM

FOLLOW US ON     BANSALTEAM.COM

CENTURY 21

CENTURY 21 PERCY FULTON LTD. BROKERAGE

Percy Fulton Ltd.

OFFICE: 416.298.8200

BROKERAGE

CENTURY 21 PERCY FULTON LTD. BROKERAGE

THIS IS NOT INTENDED TO SOLICIT BUYERS OR SELLERS CURRENTLY UNDER CONTRACT WITH A BROKERAGE.

515 ALDER COURT

www.515AlderCourt.com

BANSAL TEAM
PROFESSIONALS IN REAL ESTATE



WELCOME TO 515 Alder Court

Well Maintained 3 Bedroom, 3 Bath Detached Home in Prestigious Amberlea Neighbourhood * Huge Pie Shaped Lot * Child Safe Cul-De-Sac * Hardwood Floors on Main and Second Floor * Interlock Walkway * Basement Features Rec Room with Fireplace and 4 Piece Bath * 4 Car Parking in Driveway * (Roof, Furnace & Central Air 1 Year), Newer Windows * Close to Good Schools, Transit, Hwy 401, Pickering Town Centre and more.

LOT SIZE: 23.03 x 109.65 Ft.
60 Ft. Wide Rear
TAXES: \$5327.17/2023

www.515AlderCourt.com



BANSALTEAM.COM