

SHIV BANSAL TEAM

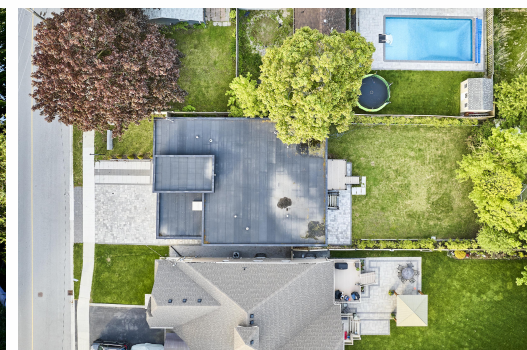
— PROFESSIONALS IN REAL ESTATE —

DIRECT: 416.396.3550 | SHIV@BANSALTEAM.COM

FOLLOW US ON     BANSALTEAM.COM



Top 5 Team In Canada For Over 20 Years In Century 21



CENTURY 21
Percy Fulton Ltd.

CENTURY 21 PERCY FULTON LTD. BROKERAGE
OFFICE: 416.298.8200

BROKERAGE

THIS IS NOT INTENDED TO SOLICIT BUYERS OR SELLERS CURRENTLY UNDER CONTRACT WITH A BROKERAGE.

125 WATSON ST.
www.125Watson.com

CENTURY 21
Percy Fulton Ltd.

BROKERAGE



BANSAL TEAM
— PROFESSIONALS IN REAL ESTATE —

DIRECT: 416.396.3550 | INFO@BANSALTEAM.COM

FOLLOW US ON     BANSALTEAM.COM

CENTURY 21 PERCY FULTON LTD. BROKERAGE

125 WATSON ST.

www.125Watson.com

BANSAL TEAM
— PROFESSIONALS IN REAL ESTATE —



WELCOME TO 125 Watson Street E

* Beautiful & Bright 3 Year Old Custom Built Modern Bungalow in Port of Whitby ** Over 4000 Sq Ft of Living Space ** 15 Minute Walk To Waterfront ** Backs Onto Green Space * 144 Foot Deep Lot * Oversized 2 Car Garage * Custom Built-Ins * 16 Ft Ceiling in Foyer * 12 Feet Ceiling on Main * 3 Bedrooms on Main Each With Full Bathrooms * Separate Entrance to Finished Walk-up Basement With 10 Foot Ceilings, Living, Dining, Kitchen, 3 Additional Bedrooms and Two 4 Pc Bathrooms * Gourmet Kitchen With Built-in Appliances & Large Centre Island * Hardwood Floors On Main * Entrance Through Garage * Interlock Front Walkway, Driveway & Backyard * Close to Lake, Parks, Trails, Hwy 401, Go Station, Shops & More *

LOT SIZE: 48.25 x 144 Ft
Taxes: \$10,830.49/2024

www.125Watson.com



BANSALTEAM.COM