

SHIV BANSAL TEAM

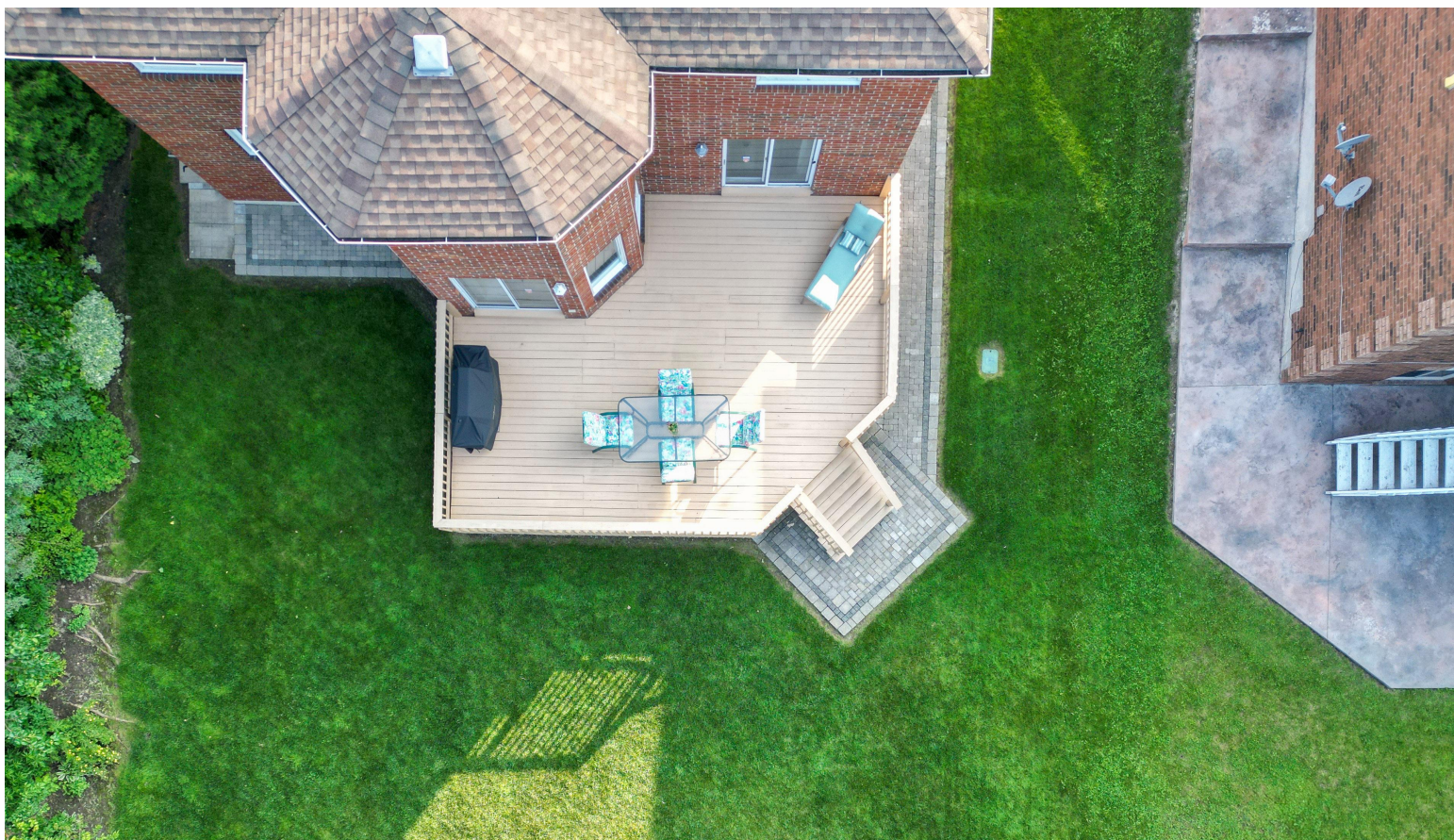
PROFESSIONALS IN REAL ESTATE

DIRECT: 416.396.3550 | SHIV@BANSALTEAM.COM

FOLLOW US ON     BANSALTEAM.COM



Top 5 Team In Canada For Over 20 Years In Century 21



CENTURY 21
Percy Fulton Ltd.

CENTURY 21 PERCY FULTON LTD. BROKERAGE
OFFICE: 416.298.8200

BROKERAGE

THIS IS NOT INTENDED TO SOLICIT BUYERS OR SELLERS CURRENTLY UNDER CONTRACT WITH A BROKERAGE.

63 SIMMS DR.

www.63Simms.com

CENTURY 21

Percy Fulton Ltd.

BROKERAGE



BANSAL TEAM
PROFESSIONALS IN REAL ESTATE

DIRECT: 416.396.3550 | INFO@BANSALTEAM.COM

FOLLOW US ON     BANSALTEAM.COM

CENTURY 21 PERCY FULTON LTD. BROKERAGE

63 SIMMS DR.

www.63Simms.com

BANSAL TEAM
— PROFESSIONALS IN REAL ESTATE —

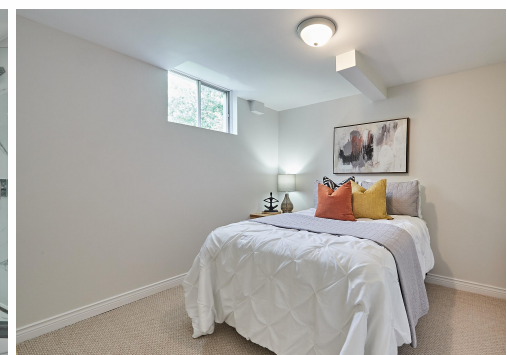
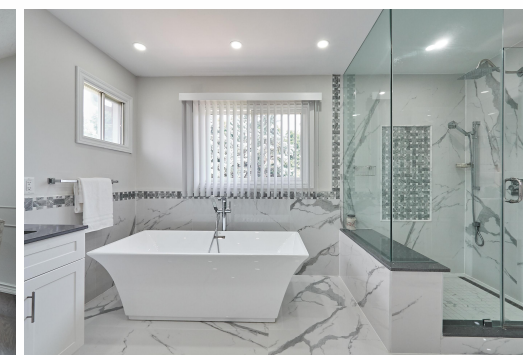


WELCOME TO 63 Simms Drive

Totally Updated Top to Bottom * 3,182 Square Feet * Premium 60 x 134 Ft. Lot Backing Onto Ravine in Sought after Pickering Village* 4+1 Bedrooms * 5 Baths * Custom Kitchen w/Quartz Counters & Backsplash, Centre Island & Pantry * New Engineered Hardwood Floors on Main & 2nd * Main Floor Office* Pot Lights * Stone Face Electric Fireplace in Family Room * Spiral Oak Stairs w/Wrought Iron Pickets * Separate Entrance to Basement Apartment (Never Rented). * Stunning Interlock Patterned Driveway & Patio w/Retaining Walls* In-ground Sprinklers * Private Backyard * Close to Schools, Go Station, Hwy 401 and 407, Shopping and more * Upgraded Attic Insulation to R50 * Garage w/Epoxy Floor & Storage. Furnace & Central Air (4 yrs), Roof & Most Windows (15yrs)

LOT SIZE: 59.77 x 134.64 Ft.
TAXES: \$7,869.05/ 2023

www.63Simms.com



BANSALTEAM.COM