

SHIV BANSAL TEAM

PROFESSIONALS IN REAL ESTATE

DIRECT: 416.396.3550 | SHIV@BANSALTEAM.COM

FOLLOW US ON     BANSALTEAM.COM



Top 5 Team In Canada For Over 20 Years In Century 21



CENTURY 21
Percy Fulton Ltd.

CENTURY 21 PERCY FULTON LTD. BROKERAGE
OFFICE: 416.298.8200

BROKERAGE

2280 WINLORD PLACE

www.2280Winlord.com

CENTURY 21

Percy Fulton Ltd.

BROKERAGE

BANSAL TEAM
PROFESSIONALS IN REAL ESTATE

DIRECT: 416.396.3550 | INFO@BANSALTEAM.COM

FOLLOW US ON     BANSALTEAM.COM

CENTURY 21 PERCY FULTON LTD. BROKERAGE

THIS IS NOT INTENDED TO SOLICIT BUYERS OR SELLERS CURRENTLY UNDER CONTRACT WITH A BROKERAGE.

2280 WINLORD PLACE

www.2280Winlord.com

BANSAL TEAM

PROFESSIONALS IN REAL ESTATE

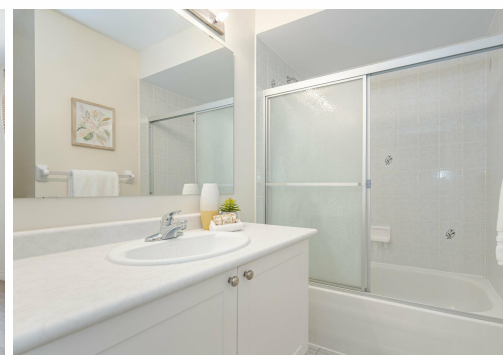
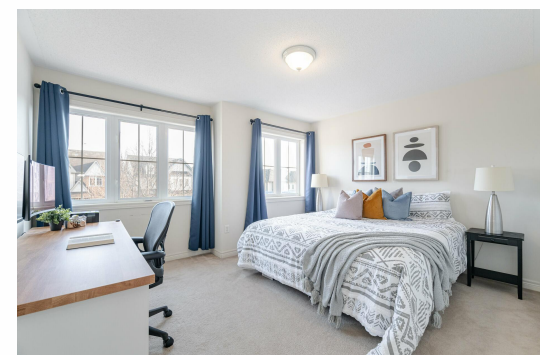
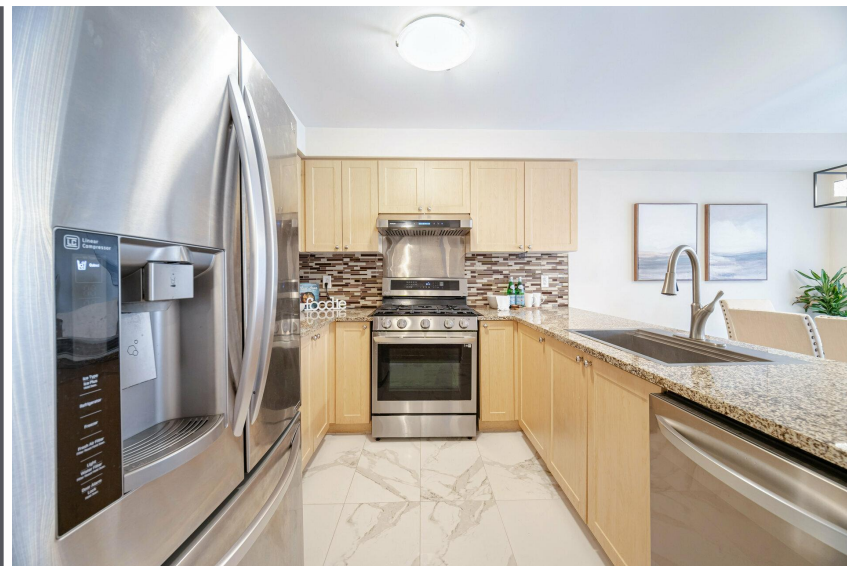


WELCOME TO 2280 Winlord Place

Detached 4+1 Bedroom 4 Bath *
New Engineered Hardwood Floors
on Main * Kitchen with Granite
Counters and Walk-Out to Deck *
Pot Lights on Main Floor and
Basement * Walk-Out Basement
Apartment with Living Room,
Bedroom, and 4 Pc Bath * Roof
(3yrs) * Furnace (4yrs) * Minutes
to Hwy 401/407, Costco, Durham
College, Shopping, Banks and
more * Updated 200 Amp Electric
Panel with EV Charger

LOT SIZE: 30 x 90 Ft.
TAXES: \$5394.73/2024

www.2280Winlord.com



BANSALTEAM.COM