

# SHIV BANSAL TEAM

PROFESSIONALS IN REAL ESTATE

DIRECT: 416.396.3550 | SHIV@BANSALTEAM.COM

FOLLOW US ON     BANSALTEAM.COM



Top 5 Team In Canada For Over 20 Years In Century 21



## 39 WILCLAY AVENUE

[www.39Wilclay.com](http://www.39Wilclay.com)

## CENTURY 21

Percy Fulton Ltd.

BROKERAGE



# BANSAL TEAM

PROFESSIONALS IN REAL ESTATE

DIRECT: 416.396.3550 | INFO@BANSALTEAM.COM

FOLLOW US ON     BANSALTEAM.COM

## CENTURY 21

CENTURY 21 PERCY FULTON LTD. BROKERAGE

Percy Fulton Ltd.

OFFICE: 416.298.8200

BROKERAGE

CENTURY 21 PERCY FULTON LTD. BROKERAGE

THIS IS NOT INTENDED TO SOLICIT BUYERS OR SELLERS CURRENTLY UNDER CONTRACT WITH A BROKERAGE.

39 WILCLAY AVENUE

www.39Wilclay.com

BANSAL TEAM

PROFESSIONALS IN REAL ESTATE

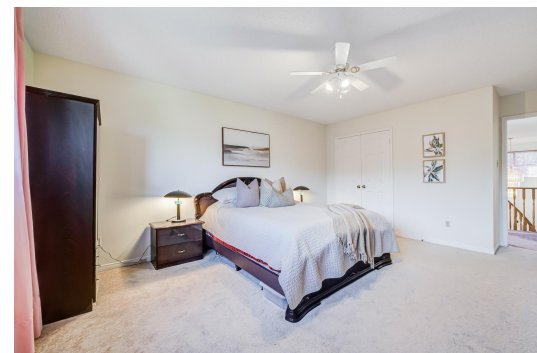


## WELCOME TO 39 Wilclay Avenue

4 Bedroom Detached Home In Highly Desirable Milliken Mills East Community In Markham \* 3186 Sq Ft \* Grand Foyer Entrance With Soaring 16 Ft Ceiling\* Brazilian Cherry Solid Hardwood Floors On Main \* Crown Moulding & Pot Lights \* Formal Living & Dining Rooms \* Family Room With Fireplace \* Modern Kitchen Featuring Quartz Counters & Spacious Breakfast Area \* Main Floor Office \* Convenient 3pc Bathroom On Main Floor With Shower \* Spacious Primary Retreat With 2 Double Closets & 6Pc Ensuite \* Generously Sized Bedrooms All With Double Closets \* Interior Garage Access\* Fantastic Family-Friendly Location Close To Top Rated Schools, Parks, Shopping, Transit & Easy Access To Hwy 401 & 407 \* Steps To Amenities. Roof & Furnace (7 yrs)

LOT SIZE: 45.93 x 114.95 Ft.  
TAXES: \$7,185/2025

www.39Wilclay.com



BANSALTEAM.COM