

SHIV BANSAL TEAM

PROFESSIONALS IN REAL ESTATE

DIRECT: 416.396.3550 | SHIV@BANSALTEAM.COM

FOLLOW US ON     BANSALTEAM.COM



Top 5 Team In Canada For Over 20 Years In Century 21



206 FINCH AVE. E

www.206Finch.com

CENTURY 21

Percy Fulton Ltd.

BROKERAGE



BANSAL TEAM

PROFESSIONALS IN REAL ESTATE

DIRECT: 416.396.3550 | INFO@BANSALTEAM.COM

FOLLOW US ON     BANSALTEAM.COM

CENTURY 21

Percy Fulton Ltd.

CENTURY 21 PERCY FULTON LTD. BROKERAGE

OFFICE: 416.298.8200

BROKERAGE

CENTURY 21 PERCY FULTON LTD. BROKERAGE

THIS IS NOT INTENDED TO SOLICIT BUYERS OR SELLERS CURRENTLY UNDER CONTRACT WITH A BROKERAGE.

206 Finch Avenue E

BANSAL TEAM
PROFESSIONALS IN REAL ESTATE

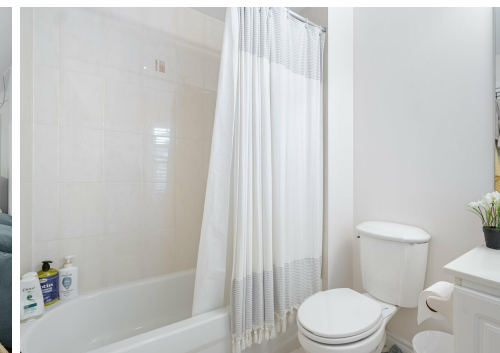
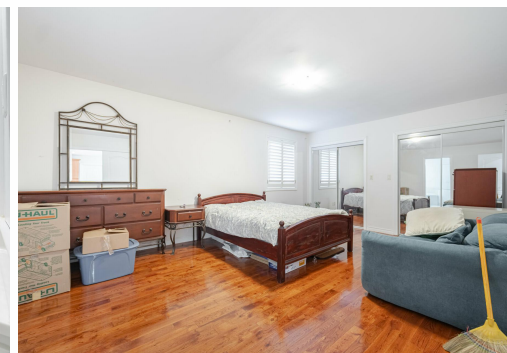
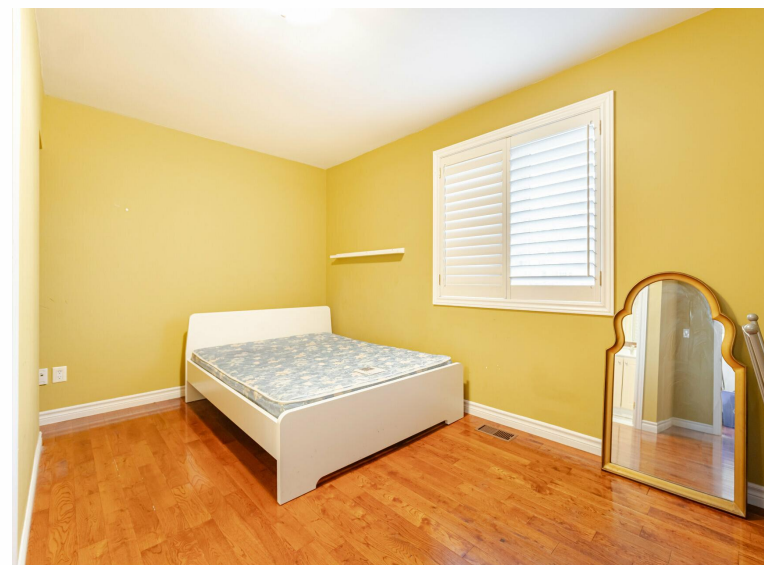


WELCOME TO 206 Finch Avenue E

Great Investment in desirable Willowdale Neighbourhood * 6+2 Bedrooms * 3 Kitchens * Over 2800 Sq. Ft. * Built in 2009 * Hardwood Floors * California Shutters * Crown Moulding on Main * Pot Lights * Interlock Front * Close to Bayview Village Shopping Centre, Finch Subway, TTC, Highways 401 & 404

LOT SIZE:

www.206Finch.com



BANSALTEAM.COM