

# SHIV BANSAL TEAM

PROFESSIONALS IN REAL ESTATE

DIRECT: 416.396.3550 | SHIV@BANSALTEAM.COM

FOLLOW US ON     BANSALTEAM.COM



Top 5 Team In Canada For Over 20 Years In Century 21



## CENTURY 21

Percy Fulton Ltd.

BROKERAGE

CENTURY 21 PERCY FULTON LTD. BROKERAGE

OFFICE: 416.298.8200

THIS IS NOT INTENDED TO SOLICIT BUYERS OR SELLERS CURRENTLY UNDER CONTRACT WITH A BROKERAGE.

## 640 SUNBIRD TRAIL

[www.640Sunbird.com](http://www.640Sunbird.com)

## CENTURY 21

Percy Fulton Ltd.

BROKERAGE



## BANSAL TEAM

PROFESSIONALS IN REAL ESTATE

DIRECT: 416.396.3550 | INFO@BANSALTEAM.COM

FOLLOW US ON     BANSALTEAM.COM

CENTURY 21 PERCY FULTON LTD. BROKERAGE



**640 SUNBIRD TRAIL**  
**www.640Sunbird.com**

**BANSAL TEAM**  
— PROFESSIONALS IN REAL ESTATE —

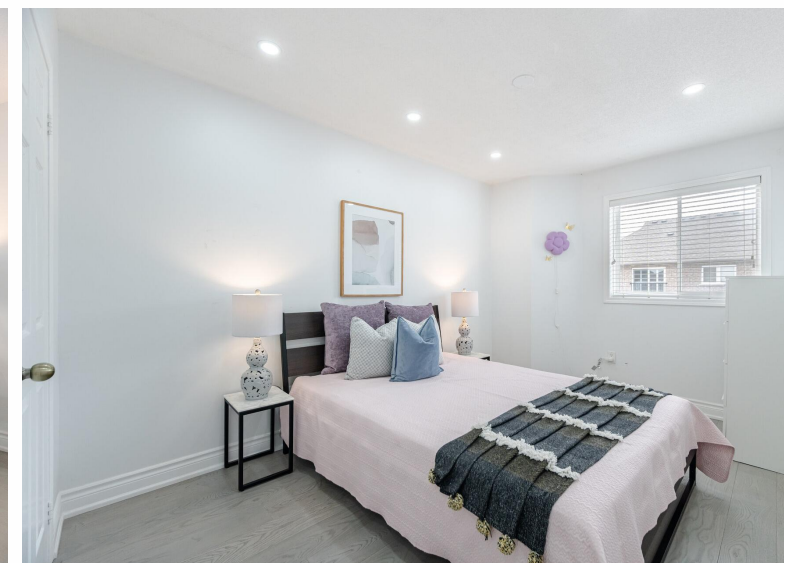


## WELCOME TO 640 Sunbird Trail

\* 4 Bedroom 4 Bath Detached  
Home in Highly Demanded Area  
of Pickering, Amberlea \*  
Hardwood Floors on Second \*  
Entrance Through Garage \*  
Kitchen With Quartz Counters \*  
Primary Bedroom with 5 Pc  
Ensuite \* 2 Kitchens \* 4 Car  
Parking on Driveway \* Basement  
Fully Finished With Separate  
Entrance \* Close to Good  
Schools, Parks, Trails, Shops,  
HWY 401 & More \*

LOT SIZE: 24.93 X 109.91 Ft  
TAXES: \$ 6976/2024

**www.640Sunbird.com**



**BANSALTEAM.COM**