

SHIV BANSAL TEAM

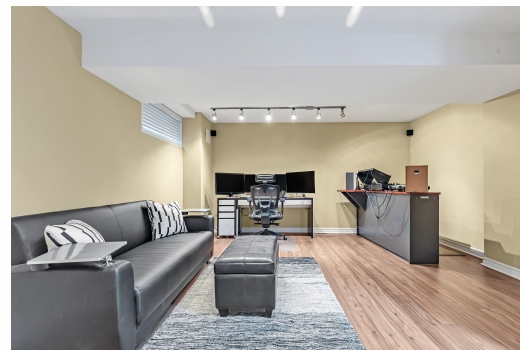
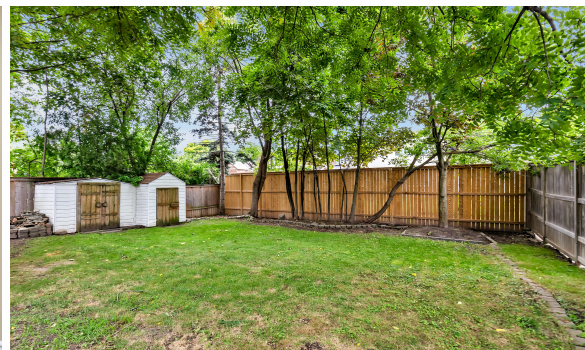
PROFESSIONALS IN REAL ESTATE

DIRECT: 416.396.3550 | SHIV@BANSALTEAM.COM

FOLLOW US ON     BANSALTEAM.COM



Top 5 Team In Canada For Over 20 Years In Century 21



1843 MALDEN CRES.

www.1843Malden.com

CENTURY 21

Percy Fulton Ltd.

BROKERAGE



BANSAL TEAM

PROFESSIONALS IN REAL ESTATE

DIRECT: 416.396.3550 | INFO@BANSALTEAM.COM

FOLLOW US ON     BANSALTEAM.COM

CENTURY 21

CENTURY 21 PERCY FULTON LTD. BROKERAGE

Percy Fulton Ltd.

OFFICE: 416.298.8200

BROKERAGE

CENTURY 21 PERCY FULTON LTD. BROKERAGE

THIS IS NOT INTENDED TO SOLICIT BUYERS OR SELLERS CURRENTLY UNDER CONTRACT WITH A BROKERAGE.

1843 MALDEN CRES.

BANSAL TEAM
PROFESSIONALS IN REAL ESTATE

www.1843Malden.com



WELCOME TO 1843 Malden Crescent

3+1 Bedroom 3 Bath 5 Level Side Split * Updated Bathrooms with Quartz Counters * Pot Lights * Entrance from Garage * Main Floor Family Room Plus Two Level Basement Can Be Used As A Basement Apartment with Walk-Out from Family Room * Furnace and Central Air (9yrs) * New Flat Roof * Roof (12 yrs) * Windows (14yrs) * Close to Great Schools, Pickering Town Centre, Go Station, Hwy 401 and more.

LOT SIZE: 46 x 116 Ft.
TAXES: \$6755.95/2024

www.1843Malden.com



BANSALTEAM.COM