

# SHIV BANSAL TEAM

PROFESSIONALS IN REAL ESTATE

DIRECT: 416.396.3550 | SHIV@BANSALTEAM.COM

FOLLOW US ON     BANSALTEAM.COM



Top 5 Team In Canada For Over 20 Years In Century 21



CENTURY 21<sup>®</sup>  
Percy Fulton Ltd.

CENTURY 21 PERCY FULTON LTD. BROKERAGE  
OFFICE: 416.298.8200

BROKERAGE

THIS IS NOT INTENDED TO SOLICIT BUYERS OR SELLERS CURRENTLY UNDER CONTRACT WITH A BROKERAGE.

6 BRAY DR.

[www.6Bray.com](http://www.6Bray.com)

CENTURY 21<sup>®</sup>

Percy Fulton Ltd.

BROKERAGE



BANSAL TEAM  
PROFESSIONALS IN REAL ESTATE

DIRECT: 416.396.3550 | INFO@BANSALTEAM.COM

FOLLOW US ON     BANSALTEAM.COM

CENTURY 21 PERCY FULTON LTD. BROKERAGE

6 BRAY DR.

[www.6Bray.com](http://www.6Bray.com)

**BANSAL TEAM**  
— PROFESSIONALS IN REAL ESTATE —

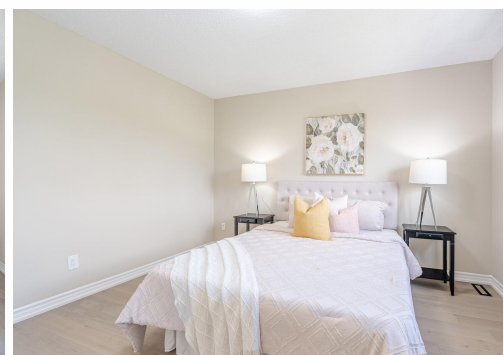


## WELCOME TO 6 Bray Drive

Totally Updated \*\* 4 + 3 Bedrooms \*  
5 Baths \* 2811 Sq. Ft. Backs Onto  
Greenspace \*\* Absolutely  
Immaculate \* New Hardwood Floors  
Thru-Out \* Laminate Floor in  
Basement \* Spacious Updated  
Kitchen with Plenty of Storage Space  
\* 3 Full Updated Bathrooms on  
Second Floor \* Oak Stairs with  
Wrought Iron Pickets \* Walkout 3  
Bedroom Basement Apartment \*\*  
Windows (4yrs), Furnace (6yrs),  
Roof, Central Air, & HWT (8yrs)

LOT SIZE: 49.87 x 110 Ft.  
TAXES: \$7851.38/2024

[www.6Bray.com](http://www.6Bray.com)



[BANSALTEAM.COM](http://BANSALTEAM.COM)