

# SHIV BANSAL TEAM

PROFESSIONALS IN REAL ESTATE

DIRECT: 416.396.3550 | SHIV@BANSALTEAM.COM

FOLLOW US ON     BANSALTEAM.COM



Top 5 Team In Canada For Over 20 Years In Century 21



## 2000 ROYAL ROAD

[www.2000Royal.com](http://www.2000Royal.com)

## CENTURY 21

Percy Fulton Ltd.

BROKERAGE



# BANSAL TEAM

PROFESSIONALS IN REAL ESTATE

DIRECT: 416.396.3550 | [INFO@BANSALTEAM.COM](mailto:INFO@BANSALTEAM.COM)

FOLLOW US ON     BANSALTEAM.COM

## CENTURY 21

CENTURY 21 PERCY FULTON LTD. BROKERAGE

Percy Fulton Ltd.

OFFICE: 416.298.8200

BROKERAGE

CENTURY 21 PERCY FULTON LTD. BROKERAGE

THIS IS NOT INTENDED TO SOLICIT BUYERS OR SELLERS CURRENTLY UNDER CONTRACT WITH A BROKERAGE.



2000 ROYAL ROAD

www.2000Royal.com

**BANSAL TEAM**  
PROFESSIONALS IN REAL ESTATE

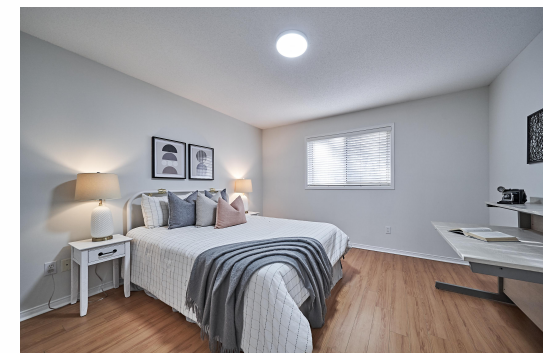


**WELCOME TO  
2000 Royal Road**

Well Kept 4 Bedroom 3 Bath \*  
Hardwood Floors on Main \*  
Freshly Painted \* Oak Stairs \*  
Large Bedrooms \* Gas  
Fireplace in Family Room \* Pot  
Lights Park 4 Cars in Driveway \*  
Roof and Central Air (2 years) \*  
Close to Schools, Shopping,  
Hwy 401, Parks, Transit and  
more

LOT SIZE: 32.81 x 92.29 Ft.  
TAXES: \$6800.00/2023

www.2000Royal.com



BANSALTEAM.COM