

# SHIV BANSAL TEAM

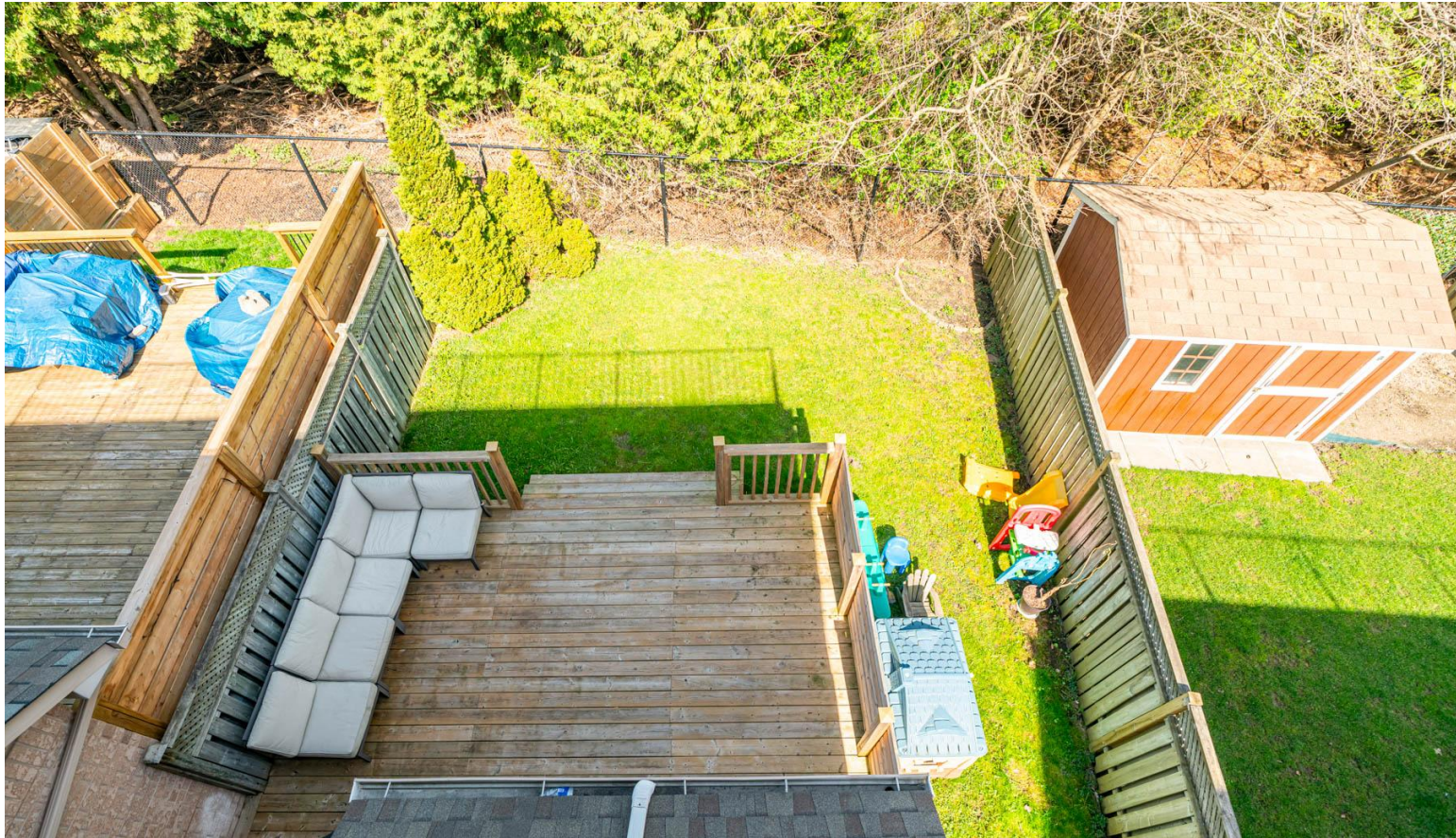
PROFESSIONALS IN REAL ESTATE

DIRECT: 416.396.3550 | SHIV@BANSALTEAM.COM

FOLLOW US ON     BANSALTEAM.COM



Top 5 Team In Canada For Over 20 Years In Century 21



## 383 Sparrow Circle

[www.383Sparrow.com](http://www.383Sparrow.com)

## CENTURY 21

Percy Fulton Ltd.

BROKERAGE



# BANSAL TEAM

PROFESSIONALS IN REAL ESTATE

DIRECT: 416.396.3550 | [INFO@BANSALTEAM.COM](mailto:INFO@BANSALTEAM.COM)

FOLLOW US ON     BANSALTEAM.COM

## CENTURY 21

Percy Fulton Ltd.

BROKERAGE

CENTURY 21 PERCY FULTON LTD. BROKERAGE

OFFICE: 416.298.8200

CENTURY 21 PERCY FULTON LTD. BROKERAGE

THIS IS NOT INTENDED TO SOLICIT BUYERS OR SELLERS CURRENTLY UNDER CONTRACT WITH A BROKERAGE.

383 Sparrow Circle

www.383Sparrow.com

**BANSAL TEAM**  
PROFESSIONALS IN REAL ESTATE

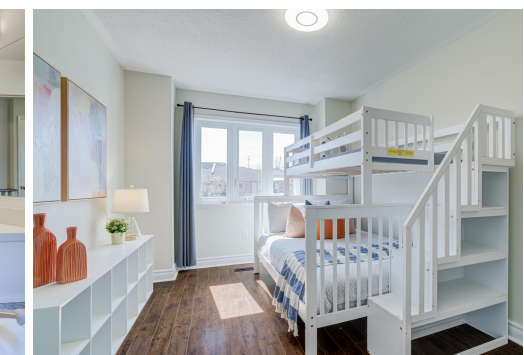
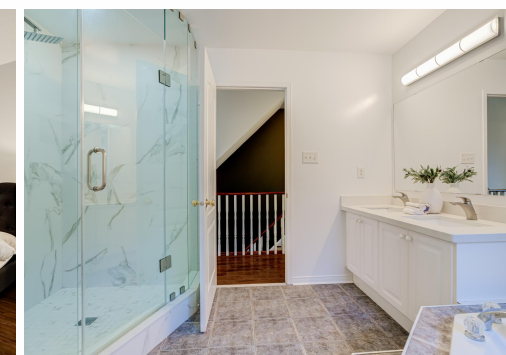


## WELCOME TO 383 Sparrow Circle

Well Maintained 4 Bedroom 3 Bath Freehold Townhome In Highly Desirable Highbush Community \* Backs Onto Serene Forest With No Rear Neighbours Offering Exceptional Privacy \* Bright Open-Concept Main Level With Hardwood Flooring \* Spacious Living & Dining Area \* Modern Kitchen With Quartz Countertops \* Interior Access From Garage \* Third Floor Private Primary Retreat With Gas Fireplace + Ensuite Bath \* Walkout To Private Patio \* Finished Basement With Recreation Room For Additional Living Space \* Basement Rough In For Bathroom\* 2 Gas Fireplaces\* Charge Point Level 2 Electric Vehicle Charger \* Windows (2024) \* Central Air (3yrs) \* Roof (8 yrs) Furnace (5yrs) \* Family-Friendly Neighbourhood \* Walking Distance To Top-Rated Schools, Parks, Trails & Nature \* Close To Transit, Shopping & All Amenities

LOT SIZE: 18 x 105 Ft.  
TAXES: \$5,977.43/2025

www.383Sparrow.com



BANSALTEAM.COM