

# SHIV BANSAL TEAM

PROFESSIONALS IN REAL ESTATE

DIRECT: 416.396.3550 | SHIV@BANSALTEAM.COM

FOLLOW US ON     BANSALTEAM.COM



Top 5 Team In Canada For Over 20 Years In Century 21



## 14 SNOWLING DR.

[www.14Snowling.com](http://www.14Snowling.com)

## CENTURY 21

Percy Fulton Ltd.

BROKERAGE



## BANSAL TEAM

PROFESSIONALS IN REAL ESTATE

DIRECT: 416.396.3550 | INFO@BANSALTEAM.COM

FOLLOW US ON     BANSALTEAM.COM

## CENTURY 21

CENTURY 21 PERCY FULTON LTD. BROKERAGE

Percy Fulton Ltd.

OFFICE: 416.298.8200

BROKERAGE

THIS IS NOT INTENDED TO SOLICIT BUYERS OR SELLERS CURRENTLY UNDER CONTRACT WITH A BROKERAGE.

CENTURY 21 PERCY FULTON LTD. BROKERAGE



14 SNOWLING DR.

[www.14Snowling.com](http://www.14Snowling.com)

**BANSAL TEAM**  
— PROFESSIONALS IN REAL ESTATE —

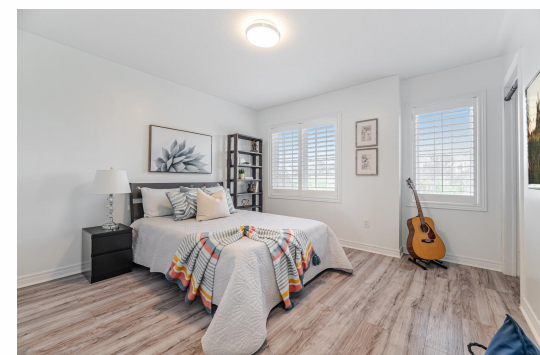


## WELCOME TO 14 Snowling Drive

Stunning \* 4+2 Bedrooms \* 5 Baths \*  
Every Bedroom with a Bathroom \* Eng.  
Hardwood Floors on Main and Second \*  
12 Ft Ceiling in Living Rm, Dining Rm,  
Office and Primary Bedroom \* Crown  
Molding in Living and Dining Rm \* 2  
Sided Fireplace Between Dining Room  
and Family Rm \* Finished Basement  
with Rec Room, 2 Bedrooms & 4 pc  
bath - Great for In-Law Suite \* Spiral  
Oak Stairs with Wrought Iron Pickets \*  
Primary Bedroom with New Hardwood  
Floors & Newly Designed 6 pc. Ensuite  
\* California Shutters Metal Roof \* No  
Grass to Cut \* Minutes to Audley  
Recreation Centre, Schools, Hwy  
401/407 and 412

LOT SIZE: 41 x 87 Ft.  
TAXES: \$8976.00/2025

[www.14Snowling.com](http://www.14Snowling.com)



[BANSALTEAM.COM](http://BANSALTEAM.COM)