

SHIV BANSAL TEAM

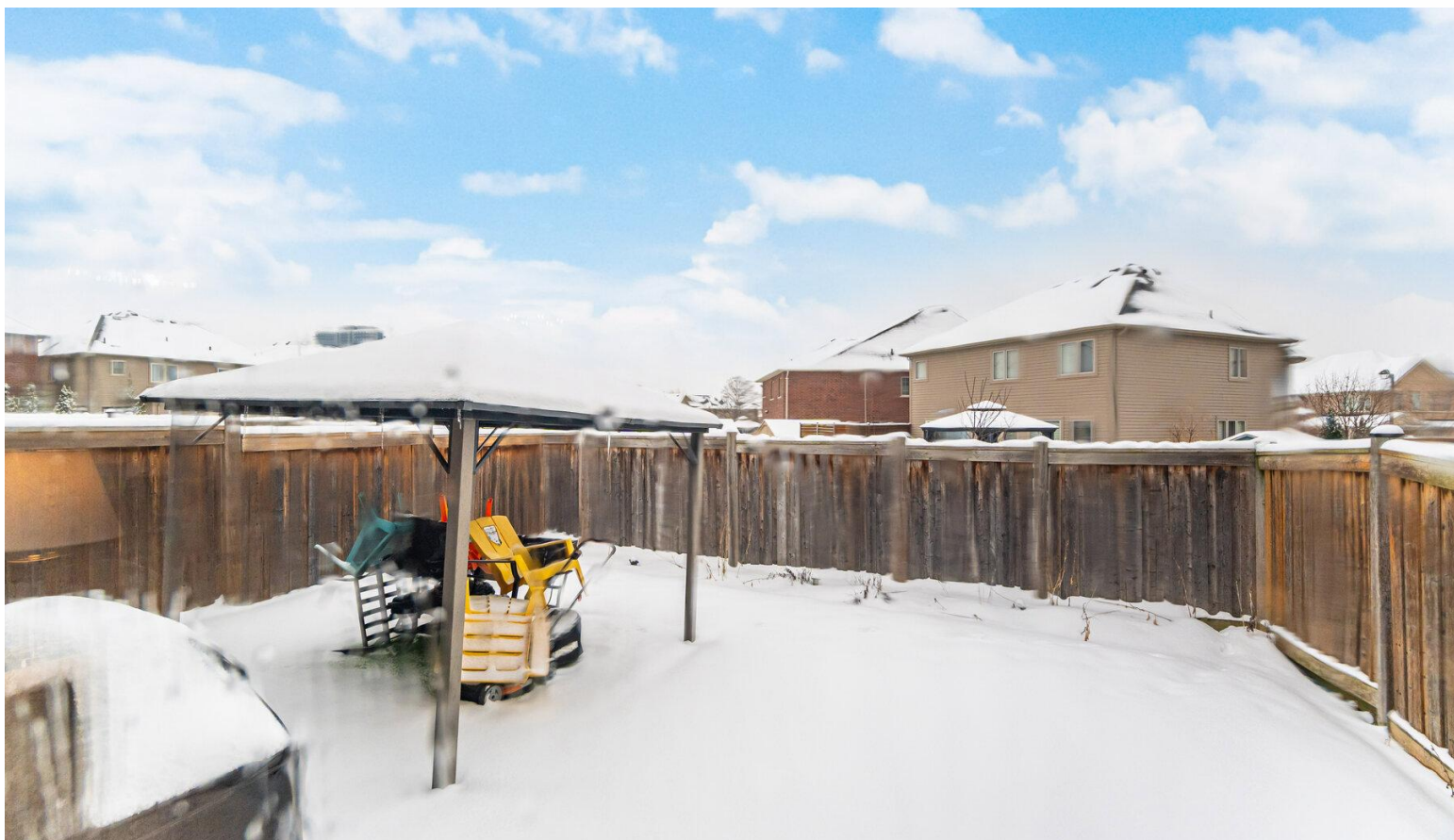
PROFESSIONALS IN REAL ESTATE

DIRECT: 416.396.3550 | SHIV@BANSALTEAM.COM

FOLLOW US ON     BANSALTEAM.COM



Top 5 Team In Canada For Over 20 Years In Century 21



CENTURY 21

Percy Fulton Ltd.

BROKERAGE

CENTURY 21 PERCY FULTON LTD. BROKERAGE

OFFICE: 416.298.8200

THIS IS NOT INTENDED TO SOLICIT BUYERS OR SELLERS CURRENTLY UNDER CONTRACT WITH A BROKERAGE.

2415 KENTUCKY DERBY WAY CENTURY 21

Percy Fulton Ltd.

BROKERAGE

www.2415KentuckyDerbyWay.com



BANSAL TEAM

PROFESSIONALS IN REAL ESTATE

DIRECT: 416.396.3550 | INFO@BANSALTEAM.COM

FOLLOW US ON     BANSALTEAM.COM

CENTURY 21 PERCY FULTON LTD. BROKERAGE

2415 KENTUCKY DERBY WAY
www.2415KentuckyDerbyWay.com

BANSAL TEAM
— PROFESSIONALS IN REAL ESTATE —

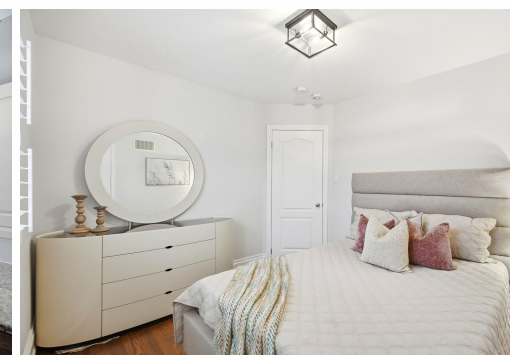
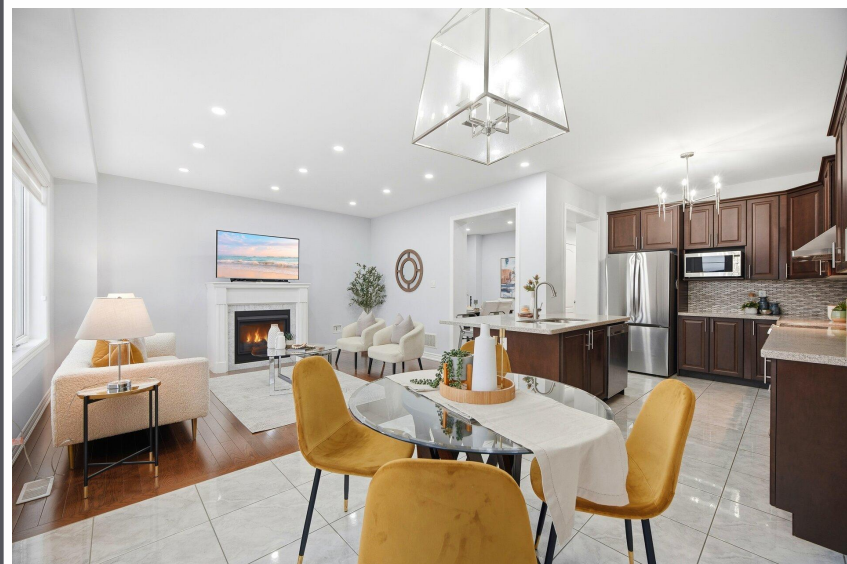


WELCOME TO 2415 Kentucky Derby Way

4+2 Bedroom 4 Bath Detached Home In Desirable Windfields Community * 9 Ft Ceilings & Pot Lights on Main Floor * 2245 Sq Ft * Hardwood Floors On Main & Second * Oak Stairs W/Wrought Iron Spindles * Family Room With Gas Fireplace * Modern Kitchen With Quartz Counter & Centre Island * Breakfast Area With Walk-Out To Backyard* Primary Bedroom With His & Hers Walk-In Closets & 6-Pc Ensuite* Finished Basement with Kitchen Cabinets, 2 Bedrooms & 4-Pc Bath * Perfect In-Law Suite* No Separate Entrance * Entrance From Garage * Gas Line for Stove and BBQ * Located Minutes To Ontario Tech University, Durham College, Parks, Schools & Transit Easy Access To Hwy 407/401, Shopping & Amenities*

LOT SIZE: 30 x 100 Ft.
TAXES: \$6875.38/2025

www.2415KentuckyDerbyWay.com



BANSALTEAM.COM