

# SHIV BANSAL TEAM

PROFESSIONALS IN REAL ESTATE

DIRECT: 416.396.3550 | SHIV@BANSALTEAM.COM

FOLLOW US ON     BANSALTEAM.COM



Top 5 Team In Canada For Over 20 Years In Century 21



## 1775 VALLEY FARM RD #80 CENTURY 21

Percy Fulton Ltd.

BROKERAGE

[www.1775ValleyFarm-80.com](http://www.1775ValleyFarm-80.com)



# BANSAL TEAM

PROFESSIONALS IN REAL ESTATE

DIRECT: 416.396.3550 | INFO@BANSALTEAM.COM

FOLLOW US ON     BANSALTEAM.COM

## CENTURY 21

CENTURY 21 PERCY FULTON LTD. BROKERAGE

Percy Fulton Ltd.

OFFICE: 416.298.8200

BROKERAGE

CENTURY 21 PERCY FULTON LTD. BROKERAGE

THIS IS NOT INTENDED TO SOLICIT BUYERS OR SELLERS CURRENTLY UNDER CONTRACT WITH A BROKERAGE.

1775 Valley Farm Road #80

www.1775ValleyFarm-80.com

**BANSAL TEAM**  
PROFESSIONALS IN REAL ESTATE

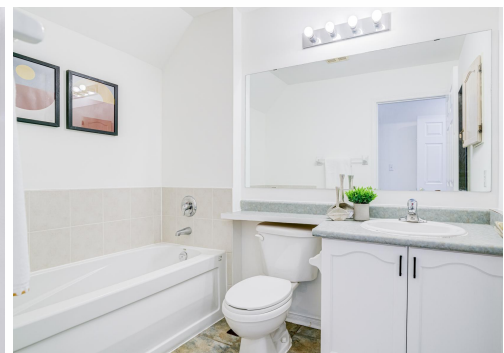


**WELCOME TO  
1775 Valley Farm Road #80**

Bright & Spacious 3 Bedroom  
Townhome In Desirable Pickering  
Town Centre Community \*  
Functional 3-Storey Layout With  
Laminate Flooring & Pot Lights  
Throughout Main Living Areas \*  
Open Concept Living & Dining  
Area \* Kitchen With Walk-Out To  
Deck \* Private Primary Retreat On  
Third Floor With Walk-In Closet &  
4-Pc Ensuite \* Garage With  
Interior Access\* Private Backyard  
\* Conveniently Located Near  
Pickering Town Centre, Transit,  
Schools, Parks, Shopping &  
Highway 401.

LOT SIZE: 13.12 x 62.01 Ft  
TAXES: \$4493.28/2026  
POTL: \$189.25/Mnth

www.1775ValleyFarm-80.com



BANSALTEAM.COM