

SHIV BANSAL TEAM

PROFESSIONALS IN REAL ESTATE

DIRECT: 416.396.3550 | SHIV@BANSALTEAM.COM

FOLLOW US ON     BANSALTEAM.COM



Top 5 Team In Canada For Over 20 Years In Century 21



133 PETWORTH CRES.

www.133Petworth.com

CENTURY 21

Percy Fulton Ltd.

BROKERAGE



BANSAL TEAM

PROFESSIONALS IN REAL ESTATE

DIRECT: 416.396.3550 | INFO@BANSALTEAM.COM

FOLLOW US ON     BANSALTEAM.COM

CENTURY 21

CENTURY 21 PERCY FULTON LTD. BROKERAGE

Percy Fulton Ltd.

OFFICE: 416.298.8200

BROKERAGE

CENTURY 21 PERCY FULTON LTD. BROKERAGE

THIS IS NOT INTENDED TO SOLICIT BUYERS OR SELLERS CURRENTLY UNDER CONTRACT WITH A BROKERAGE.

133 PETWORTH CRES.

www.133Petworth.com

BANSAL TEAM
PROFESSIONALS IN REAL ESTATE

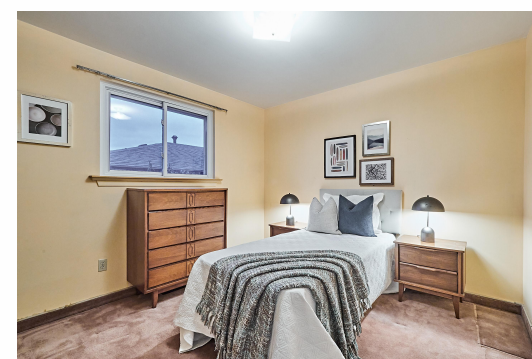


WELCOME TO 133 Petworth Crescent

Premium 170 Ft. Lot * 3+1
Bedroom Semi-Detached in a
Prime Location * Separate
Entrance to Finished Basement
with Recreation Room, 3 Pc
Bath and Fireplace * Central Air
(12), Roof (08), Furnace (04) *
Steps to Parks, Schools, TTC,
Future Go Station, Pacific Mall,
Hwy 401 and more.

LOT SIZE: 30.03 x 170.03 Ft.
TAXES: \$3944.34/2023

www.133Petworth.com



BANSALTEAM.COM