

# SHIV BANSAL TEAM

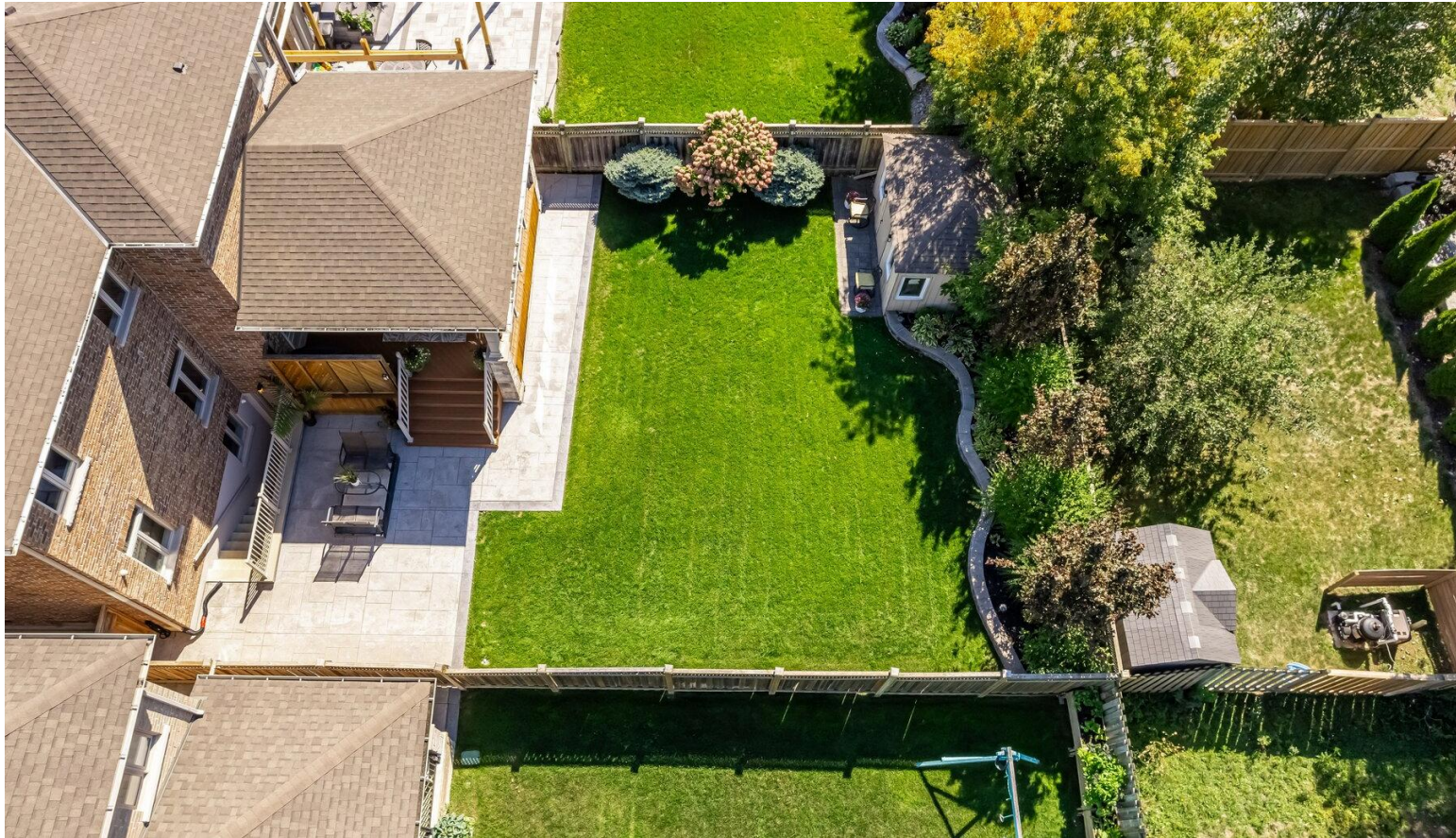
PROFESSIONALS IN REAL ESTATE

DIRECT: 416.396.3550 | SHIV@BANSALTEAM.COM

FOLLOW US ON     BANSALTEAM.COM



Top 5 Team In Canada For Over 20 Years In Century 21



**CENTURY 21**  
Percy Fulton Ltd.

CENTURY 21 PERCY FULTON LTD. BROKERAGE  
OFFICE: 416.298.8200

BROKERAGE

THIS IS NOT INTENDED TO SOLICIT BUYERS OR SELLERS CURRENTLY UNDER CONTRACT WITH A BROKERAGE.

**1738 ROCKWOOD DR.**

[www.1738Rockwood.com](http://www.1738Rockwood.com)

**CENTURY 21**

Percy Fulton Ltd.

BROKERAGE



# BANSAL TEAM

PROFESSIONALS IN REAL ESTATE

DIRECT: 416.396.3550 | INFO@BANSALTEAM.COM

FOLLOW US ON     BANSALTEAM.COM

CENTURY 21 PERCY FULTON LTD. BROKERAGE



1738 ROCKWOOD DR.

[www.1738Rockwood.com](http://www.1738Rockwood.com)

**BANSAL TEAM**  
— PROFESSIONALS IN REAL ESTATE —



## WELCOME TO 1738 Rockwood Drive

Absolutely Stunning \*Custom Built 2014 \*\*  
Prestigious Highbush Neighbourhood \*\*  
Quiet Street \*\* 5+1 Bedrooms \* 7 Baths \*  
All 5 Bedrooms with a Bathroom \*\* Over  
4600 Sq. Ft. PLUS Finished Basement \*  
167 Ft. Deep Lot \* 3 Car Garage \* 10 Ft.  
Ceilings on Main Flr \* 9 Ft. Ceiling on 2nd  
Flr & Basement \* 20 Ft. Ceiling in Foyer \*  
Hardwood Floors, Crown Moulding and  
Wainscoting on Main & 2nd Floor \* Spiral  
Oak Stairs with Wrought Iron Spindles \*  
Gourmet Kitchen with Large Island, Quartz  
Counters, Butler's Pantry, Walk-In Pantry  
and Wine Fridge \* Coffered Ceiling in Living  
and Family Room \* 2 Sided Fireplace  
Between Kitchen and Family Room \*  
Parking for 9 Cars \* One Bedroom In-Law  
Suite with Separate Entrance \* Interlocking  
Back and Front \*

LOT SIZE: 50 x 167.85 Ft.  
TAXES: \$16,257.59/2025

[www.1738Rockwood.com](http://www.1738Rockwood.com)



[BANSALTEAM.COM](http://BANSALTEAM.COM)