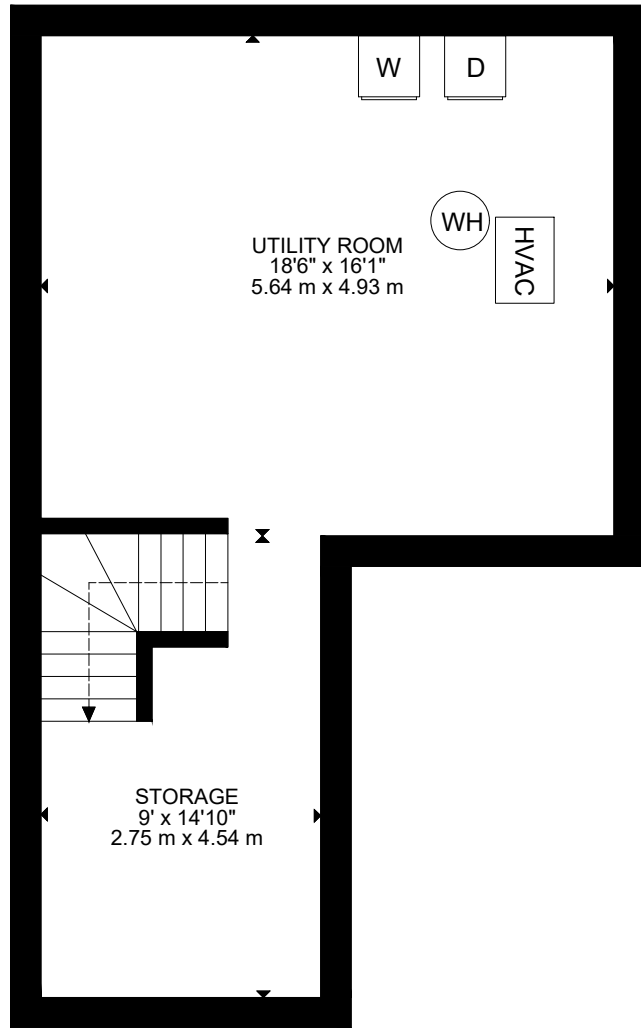
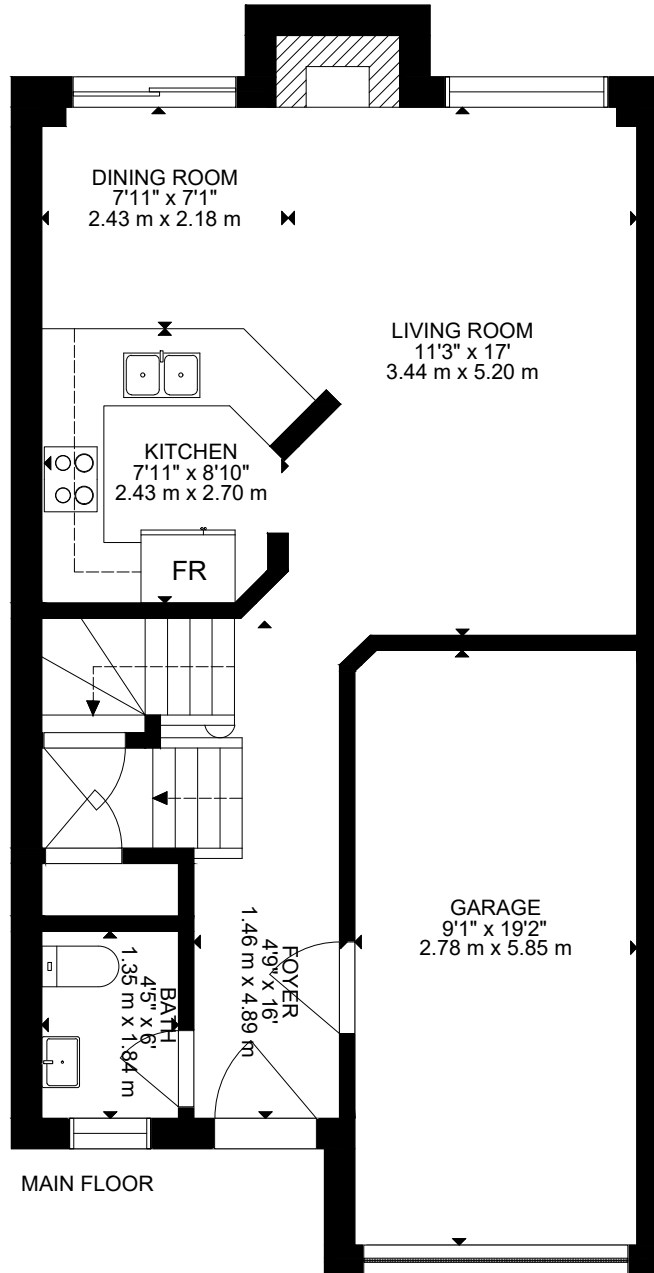


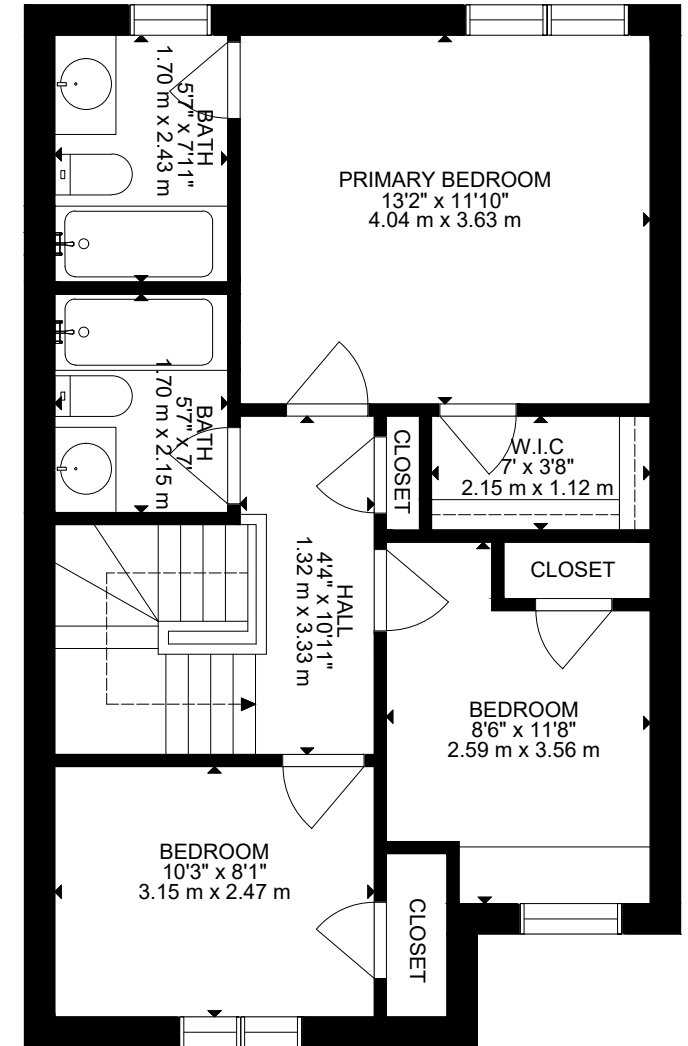
5548 Linwell Pl, Mississauga ON L5M 6L7, CA



LOWER FLOOR



MAIN FLOOR



UPPER FLOOR

GROSS INTERNAL AREA
 LOWER FLOOR : 49 m², 527 SQ FT, MAIN FLOOR: 54 m², 581 SQ FT, UPPER FLOOR: 64 m², 688 SQ FT
 EXCLUDED AREA: GARAGE: 19 m², 204 SQ FT
 TOTAL: 167 m², 1796 SQ FT
 SIZE AND DIMENSIONS ARE APPROXIMATE, ACTUAL MAY VARY