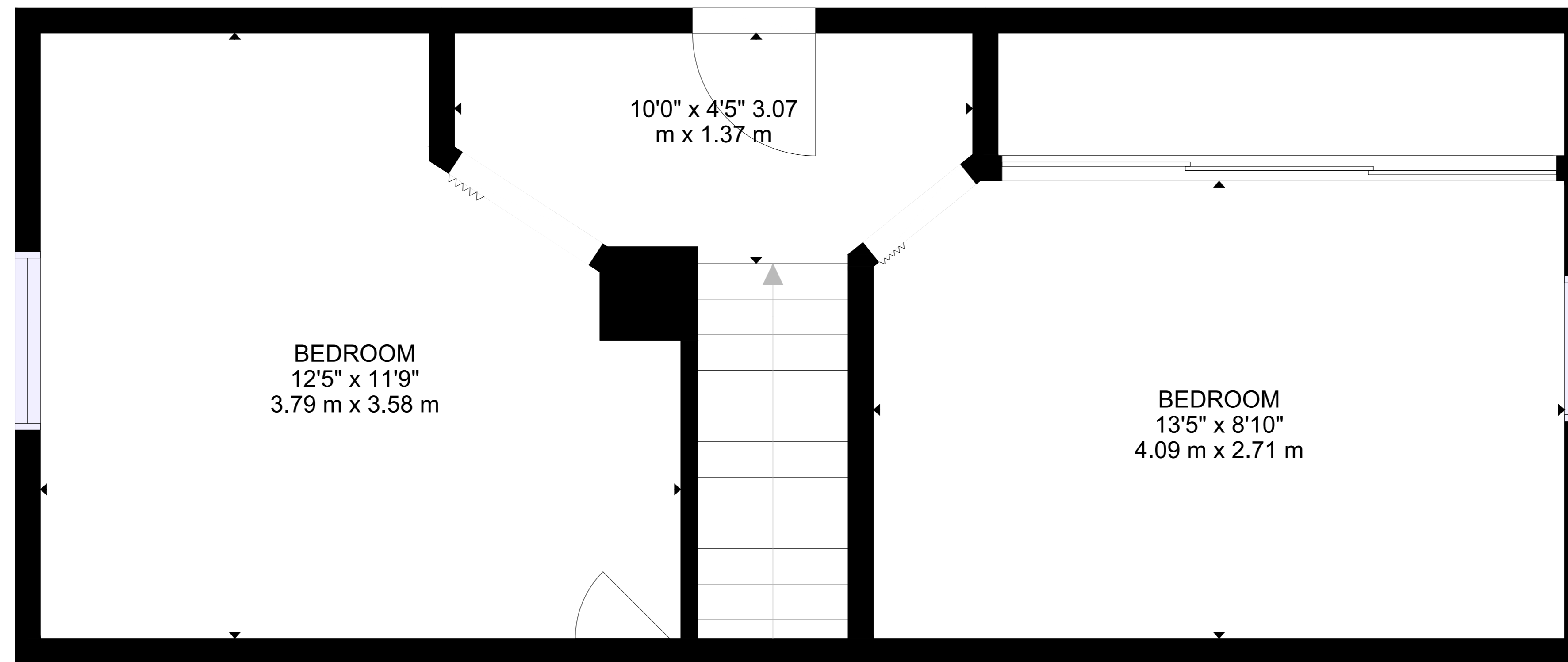
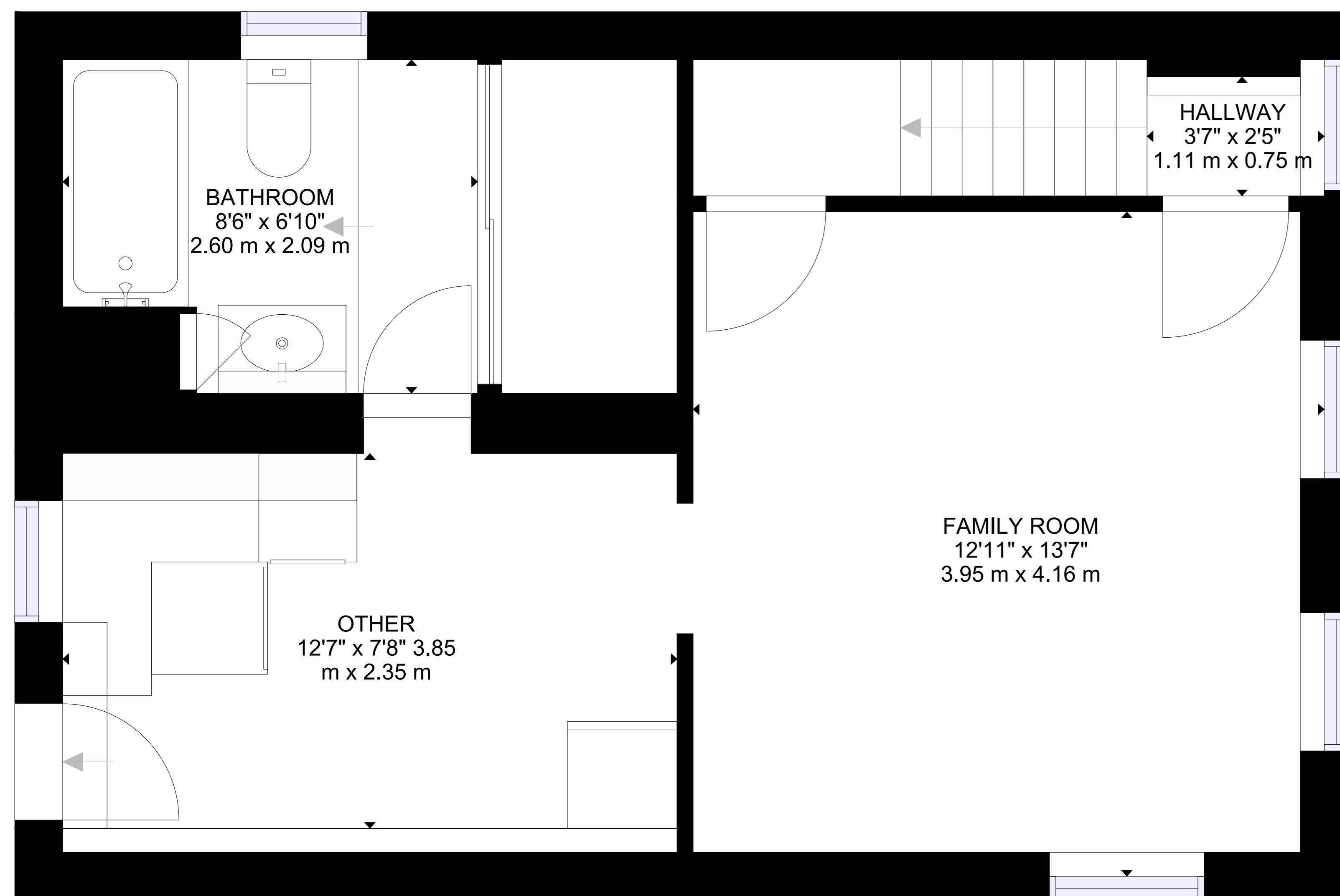


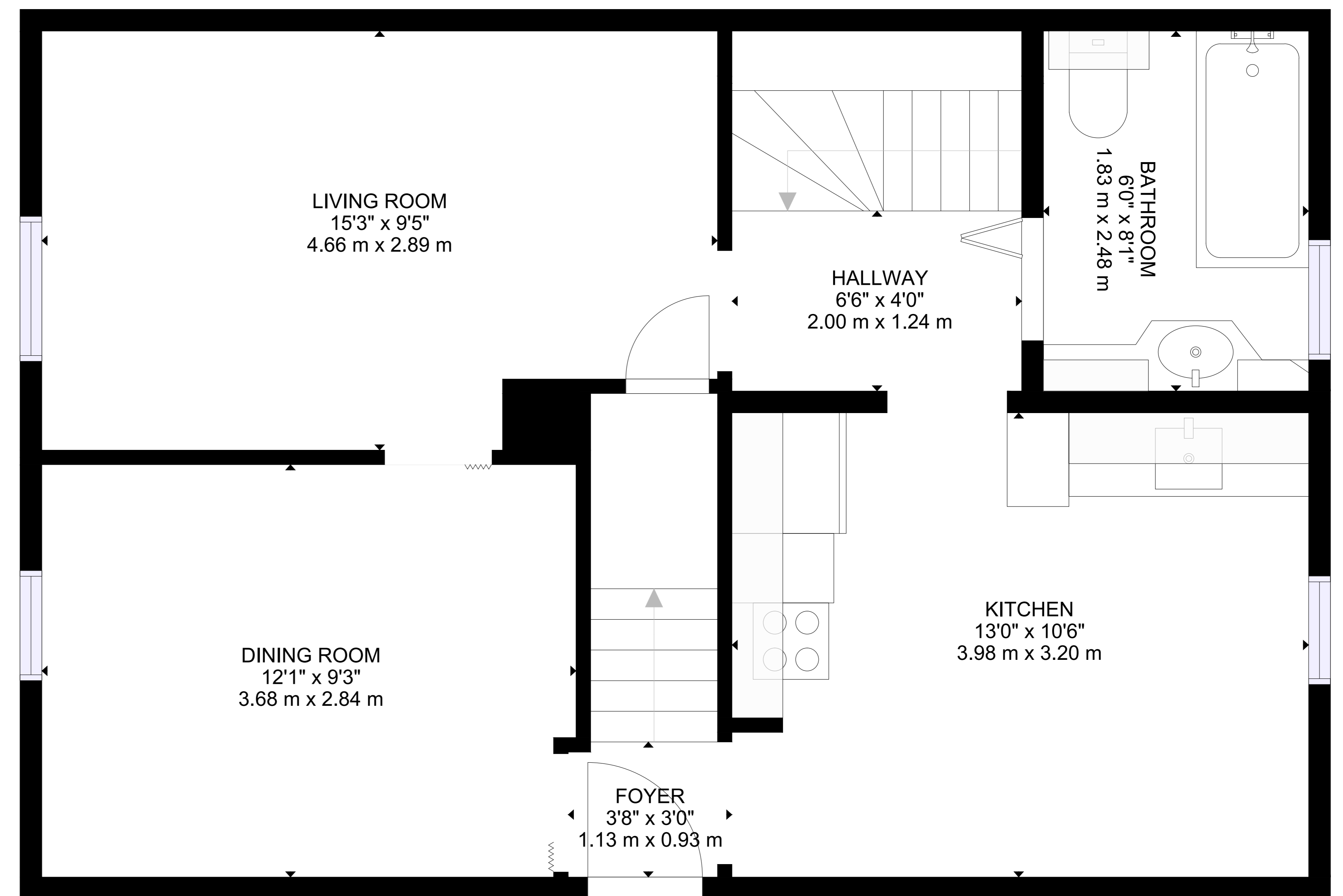
122 Montrose Street North,  
Cambridge



SECOND FLOOR



BASEMENT



MAIN FLOOR

GROSS INTERNAL AREA  
BASEMENT: 426 sq.ft, 39 m<sup>2</sup>, MAIN FLOOR: 548 sq.ft, 51 m<sup>2</sup>, SECOND FLOOR: 348 sq.ft, 32 m<sup>2</sup>  
TOTAL: 1322 sq.ft, 123 m<sup>2</sup>

SIZES AND DIMENSIONS ARE APPROXIMATE, ACTUAL MAY VARY.