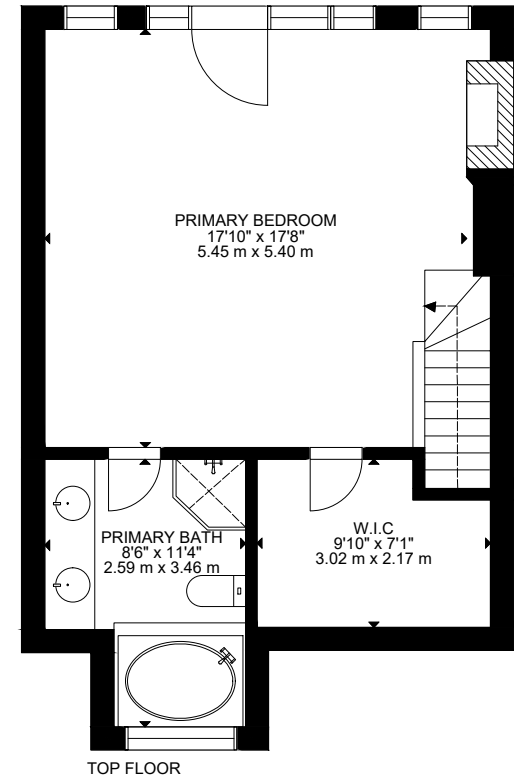
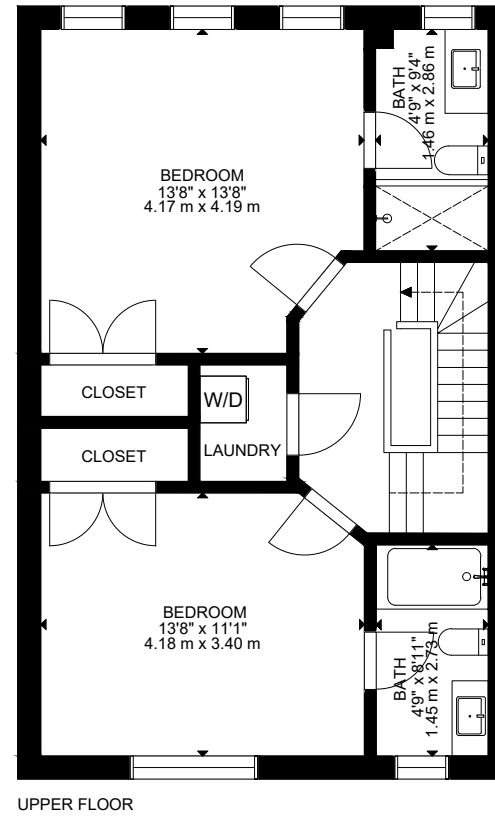
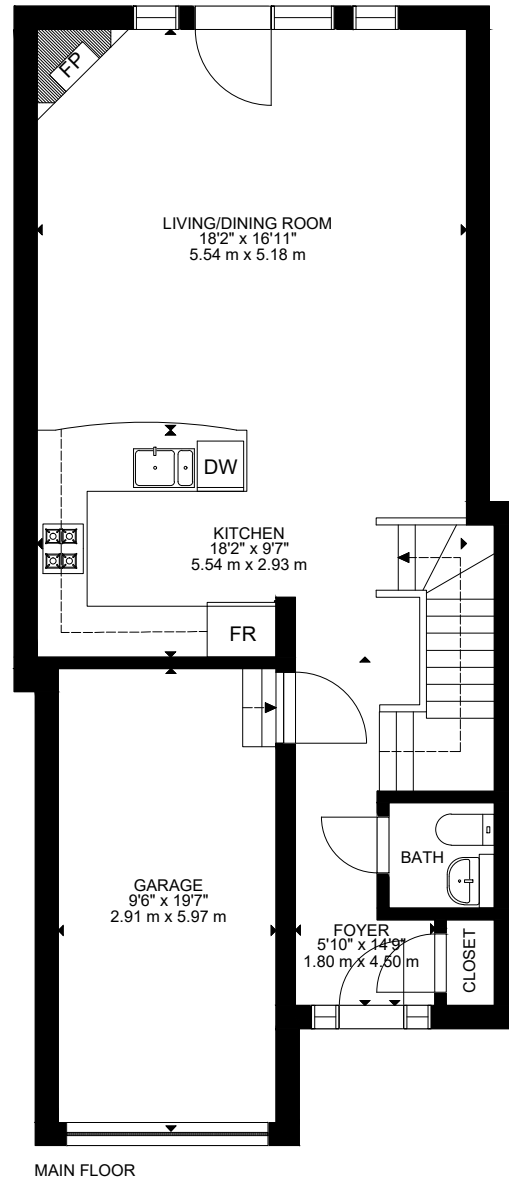
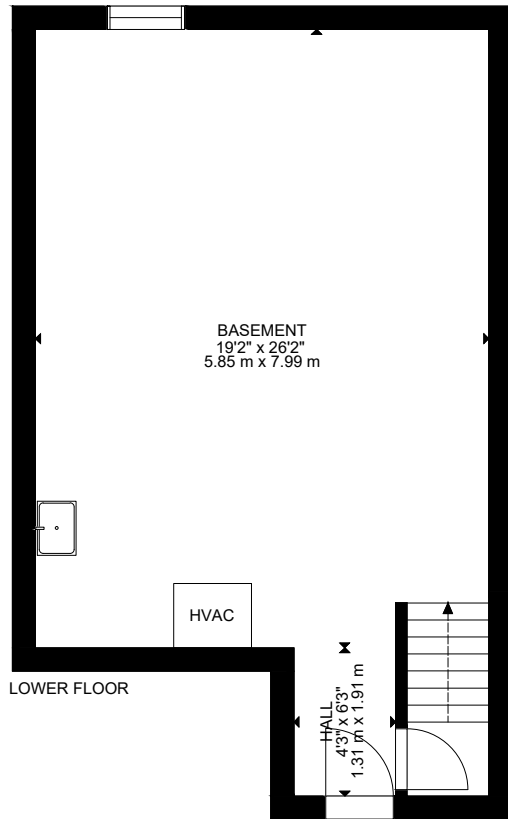


1295 Wharf Street, Pickering, ON, Canada



GROSS INTERNAL AREA  
 LOWER FLOOR: 61 m<sup>2</sup>, 656 SQ FT, MAIN FLOOR: 68 m<sup>2</sup>, 731 SQ FT, UPPER FLOOR: 63 m<sup>2</sup>, 678 SQ FT, TOP FLOOR: 55 m<sup>2</sup>, 592 SQ FT  
 EXCLUDED AREAS: GARAGE: 19 m<sup>2</sup>, 204 SQ FT  
 TOTAL: 247 m<sup>2</sup>, 2658 SQ FT  
 SIZE AND DIMENSIONS ARE APPROXIMATE, ACTUAL MAY VARY